



THE START OF A NEW ACADEMIC YEAR

First of all, we would like to welcome our new parents and carers to the WQE Community! We are delighted that you and your child have chosen WQE for the next step and we are excited to begin this journey with you as we prepare them to become the young professionals of the future.

Of course, we are also welcoming back into the community our parents and carers of returning students, who will be continuing onto the next stage of their education at WQE, whether that be their final year of A Levels, or moving up a level following a successful progression programme.

We look forward to nurturing and evolving our professional relationship with you as parents and carers as this term unfolds. You are a vital part of our community and we look forward to working closely with you.

Donna Trusler
Associate Principal (Students & Welfare)

SUCCESS AT SIXTH

We would also like to invite you to attend our online 'Success at Sixth' event for parents/carers of students who have just embarked on an exciting new programme of study with us. The evening will provide an opportunity for us to welcome you to the College and to say a little about the partnership between the College, students, and parents/carers, which we believe is essential to student success.

Date: Thursday 19th September 2024
Time: 6:30pm - 7:30pm

[CLICK HERE TO JOIN THE MEETING](#)

PARENT/CARER NEWSLETTER

UPCOMING EVENTS:



SEPTEMBER

- 5th September - Teaching starts
- 11th September - Sports trials
- 13th September - Internal UCAS early applications deadline
- 18th September - Sports trials
- **19th September - Success at Sixth evening for parents (see left)**
- 30th September-4th October - Focus Week: Recycle, Reuse, Repurpose

OCTOBER

- 7th-18th October - Early weeks survey for students
- **15th October - Personal Progress Mentor evening with L3 Y1 students who are in need of early intervention**
- 21st-25th October - Half term break
- 28th October-1st November - Focus Week: Democracy

NOVEMBER

- 2nd November - Open Day
- 4th-8th November - GCSE resits
- **19th November - Parent/Carers' Evening for L3Y2, L2 and L1/EL**

EXECUTIVE LEADERSHIP TEAM (ELT)



PAUL WILSON
PRINCIPAL



ANDREW JACKSON
ASSOCIATE PRINCIPAL - CURRICULUM
AND PROGRESSION
(INTENT)



CAROLYN DAVIES
ASSOCIATE PRINCIPAL -
FINANCE, ESTATES AND RISK



DONNA TRUSLER
ASSOCIATE PRINCIPAL - STUDENTS
AND WELFARE (GUIDANCE AND
SAFEGUARDING)



SARAH OLDFIELD
ASSOCIATE PRINCIPAL - LEARNING
AND PEOPLE STRATEGY
(IMPLEMENTATION)



TIM ROGERS
ASSOCIATE PRINCIPAL - QUALITY
ASSURANCE AND IMPROVEMENT
PLANNING
(IMPACT)

2024 RESULTS

Congratulations to our students on their incredible results in 2024. **97.8%** of students achieved an Advanced Level pass grade. **74.3%** also gained a high A*-C grade this year at GCE A level and **81%** of Advanced level vocational students achieved an equivalent high-grade. Furthermore, 16 students were awarded the highest possible A* and Distinction* grades in all three or more of their courses, whilst a further 97 also achieved a full set of at least A and equivalent grades and above.

97.8%
LEVEL 3 PASS RATE

By the morning of results being released, 269 students had already secured their place at one of the most prestigious Sutton 30 Universities, up more than 50 on the same point last year and continuing a rising trend over recent years.

39%
MATHS GCSE GRADE
CONVERTED FROM 3 TO 4+

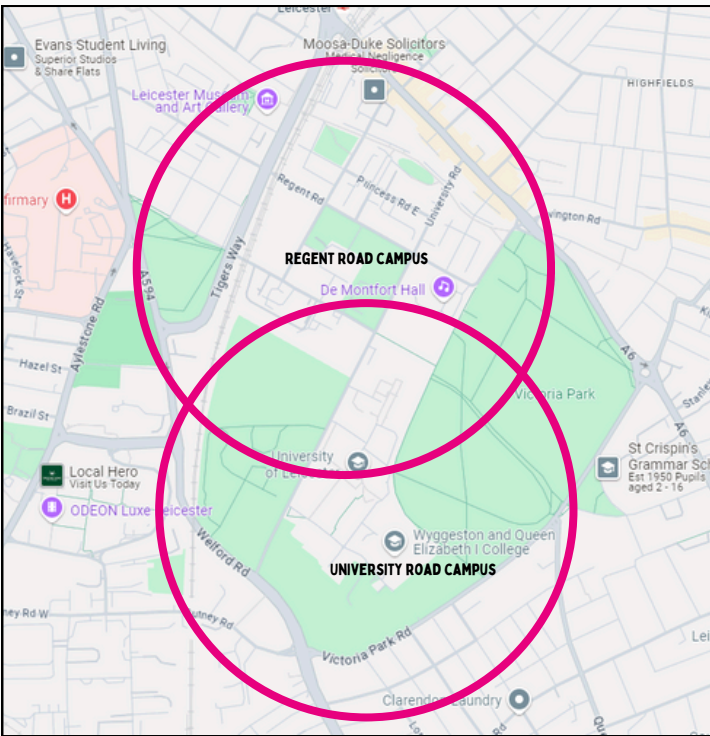
It has also been a very positive year for our students studying at Level 2 and below this year, with a big rise in completion and achievement by those following Level 2 Vocational courses, and 97% passed these courses this year. 39% of WQE students who began their post 16 studies with a grade 3 or below in Maths converted this to a grade 4 or above within the year. In English Language GCSE, this was even stronger with 63% converting their previous grade to the highest 4-9 grades.

Finally, whilst only very small numbers follow a Level 1 or Entry level course at WQE, these students have also made huge strides forward, with completion and achievement rates up again to 85% overall, supporting progression to higher levels of study.

63%
ENGLISH LANGUAGE GCSE
GRADE CONVERTED FROM
3 TO 4+

WALK THE LAST 5

We are pleased to see a large number of students taking the government advice to walk, cycle or to take public transport to college where possible. We also understand the reasons why some parents/carers are arranging for students to get a lift to the College. To avoid undue traffic congestion close to the College entrances, we are asking that students adopt a “walk the last 5” approach. If coming by car, please aim to get dropped off so that you walk the last 5 minutes. It is not permitted to stop or park in and around the barriers. The map shows approximate 5 minute walking time from the College buildings.



FINANCIAL SUPPORT

The WQE 16-19 Bursary Fund is available to provide help with some of the costs incurred by deciding to stay in education. An Enhanced Bursary is available to a defined group of “vulnerable students” and we can offer discretionary support to other students whose household income is £33,000 or less. Bursaries are based on individual need and can include support for the cost of transport meals, educational trips, and other course-related costs. To apply for the 16-19 Bursary, students need to have their own bank account and will need to provide evidence of their household income. Further information, including the application form, can be accessed on our website. If you have any additional questions, please email bursary@wqe.ac.uk or students can visit the Student Services Team at either campus.

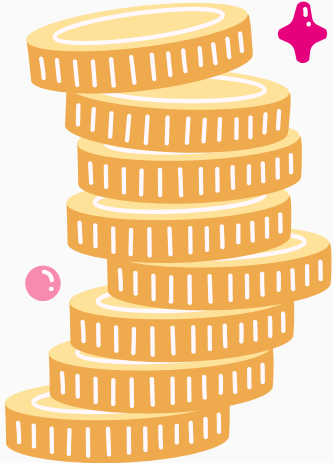
16-19 Bursary Fund Eligibility Grid 2024/25

	Description	Meals +	Transport (Living more than 2 miles from the College)	Essential kit and materials	Trips and Visits	UCAS fee
A	Enhanced Bursary. Student is either: ☐ Looked after by the Local Authority or is a Care Leaver in receipt of Income Support or Universal Credit in their own name. Disabled and in receipt of Employment and Support Allowance and either Disability Living Allowance WQE card or Personal Independence Payment in their own name.	Enhanced daily allowance on your	Full support for your annual travel costs.	Individual allowance of up to £100 per year for other specific course related costs to be reimbursed. Exam resits	100% towards trips that directly enhance your studies. (Maximum of £200 per trip)	Paid
B	Gross annual household income of below £22,000 Gross household income is the total amount of earned income plus any Income Related Benefits, Universal Credit or Tax Credits received	Daily allowance on your WQE card	Full support for an annual academic year bus pass (or equivalent contribution to other travel cost)	Individual allowance of up to £80 per year for specific course related costs to be reimbursed. Normally maximum of two exam resits	80% towards trips that directly enhance your studies. (Maximum of £150 per trip)	Paid
C	Gross annual household income in range £22,000 - £33,000 Gross household income is the total amount of earned income plus any Income Related Benefits, Universal Credit or Tax Credits received	Daily allowance on your WQE card	Contribution to travel costs (up to 80% of the relevant reimbursed annual Arriva or Flexi bus pass)	Individual allowance of up to £50 per year for specific course related costs to be reimbursed. Normally maximum of two exam resits	50% towards trips that directly enhance your studies. (Maximum of £100 per trip)	Paid

Visit

www.wqe.ac.uk/welcome-to-wqe/support-and-guidance/financial-support/

for more details



* Meal support for students studying off-site at Studio 79, LCPA or BACA will be paid via weekly BACS transfer

A LOOK BACK AT LAST YEAR...

Geography students travelled to Iceland for a field trip, where they visited waterfalls, glaciers and volcanic beaches.



Drama students took part in a comedy 'improv' workshop.



WQE hosted a Police Expo. Students came along to learn more about the police force.



Prevent Day:
Our Prevent Young Leaders organised and hosted our Prevent Day event, in which 3 guest speakers came to college to speak about their experiences.



The Debating Society organised and ran a fantastic debating competition for local schools.



Level 3 Business students ran stalls and games to raise money for Comic Relief.

A LOOK BACK AT LAST YEAR...

Guliwali Passarlay visited the college to speak to students about his experience of being a refugee.



Former student, Mike Williams, spoke to Media students about his journey to becoming a BBC journalist.



Students visited Oxford University to learn more about what it is like to study there.



French students visited Leicester Museum and Art Gallery to learn about French art.



The Chess Society took part in the Delancey UK Schools Chess Challenge in Nottingham.



The Student Exec team organised and ran Culture Day. Hundreds of students took part in this fantastic event that celebrates the diversity of the college.



ATTENDANCE AND PUNCTUALITY

Visit www.wqe.ac.uk/attendance-information/
for more details

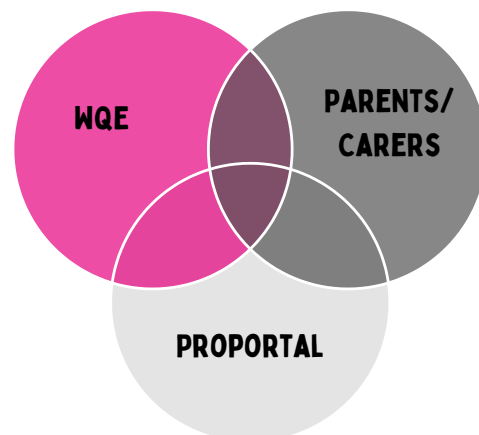
High levels of attendance and punctuality are key to students making progress. To help encourage good attendance at all lessons, WQE uses daily text and email communication with students and their parent/carers about attendance issues. If a student is feeling unwell, they need to complete a Sickness Absence Form by 10am on each day that they are absent. You will be notified if your child is not in attendance when they have scheduled lessons.

These communications are for information only. Students should deal with any questions about their attendance by talking to their PPM at the next group session. If a student starts to experience barriers to good levels of attendance, they should get in touch with the College, via their PPM, as soon as possible. The College will look to put support in place so that a return to good patterns of attendance is achieved.



As a parent/carer of a young person attending WQE College, you will have access to the ProPortal, an interactive online service you can use to review your child's progress at the college. It contains information on the following:

- Student personal and contact details with an option to edit and update details
- Attendance & punctuality summary
- A link to student reports
- Timetable
- Meetings – you will be able to view the times and dates of meetings arranged between students and staff
- Intended Progression details (when agreed) – information about your child's planned progression for example Year 2, the next level of course, another course, university, or employment
- Option to add comments for the attention of your child's Personal Progress Mentor to request a meeting with or request contact from teachers to discuss their progress



DO MORE AT WQE

When you ask students what they like about the College, they frequently highlight our enrichment opportunities. We are proud of our tradition of offering students additional courses and activities that broaden their WQE experience, and develop their personal skills.

All of our first-year students and most of our second years follow a timetabled enrichment course; some may complement examinable subjects, while others help develop skills that may be important for higher education, employment or simply adult life.

In addition to our timetabled enrichments, we offer a range of student societies, masterclasses and activities for students to join as an optional enrichment.

STUDENT EXECUTIVE



PREVENT YOUNG LEADERS



SPORTS TEAMS



BARISTA CLASS

CAREERS AT WQE

We would like to introduce you to the WQE Careers team. The friendly and supportive team is made up of Kate (Careers Education Manager), Becky (Careers Officer) and Jeevan (Careers Assistant).



Their main roles are:

- Ensuring that all students have access to the information, advice and guidance they need to make well informed and realistic decisions about their future plans
- Working with all staff at WQE, as well as other stakeholders, to give students access to the skills, knowledge and experiences they need to successfully progress into their next steps

They do this in a number of ways including:

- A one-to-one advice and guidance service that students can access at any time. This could be a booked appointment or a drop in session with a qualified Careers Adviser
- A programme of events, activities and workshops running throughout the year including our flagship events – the Careers Fair, University Exhibition and FutureWISE.

Here are some photographs from our events this year. We were really pleased to welcome 75 Universities from across the UK to our University Exhibition and 50 employers to our Careers Fair. The events are a great opportunity for students to find out more about the opportunities open to them after College.



The team are keen to work closely with parents/carers and plan to contribute to the newsletter regularly. If you have anything specific that you would like them to cover please get in touch.

If you have any questions about careers or want to find out more please contact Kate O'Farrell by emailing careers@wqe.ac.uk or calling 0116 2471147 (ext 2982).



KATE O'FARRELL
CAREERS EDUCATION MANAGER



REBECCA HOUGH
CAREERS OFFICER



JEEVAN CHHOKAR
CAREERS ASSISTANT

HIGH ACHIEVERS

WQE supports and develops students to **apply to the most competitive universities**. This work started with us advising students on maximising their potential through their A-level choices at enrolment. In the coming months, our teachers will provide **excellent learning environments** to challenge students to perform at the highest level. A **dedicated enrichment programme** for high-achieving students will start in January. Alongside our Careers and PPM service, this will help students make informed, realistic choices about applying to university as well as fostering the kinds of super-curricular knowledge and skills that will **give them the edge** when applying to the most competitive institutions.

WQE has a **track-record of supporting successful Oxbridge applications**. Early identification of those with Oxbridge potential will begin in November, based upon contextualised internal assessment data. Thereafter, the enrichment programme will work in concert with teachers to **stretch and challenge** the most able students and support them through the application and interview process.

During the last academic year, prospective Oxbridge students visited St Edmund Hall, Oxford and Pembroke College, Cambridge to take part in applicant workshops.

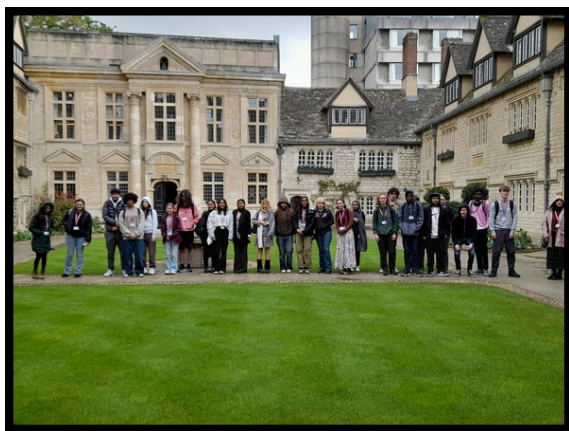


UNIVERSITY OF
OXFORD



UNIVERSITY OF
CAMBRIDGE

RUSSELL GROUP



“WQE provided me with excellent support, enabling me to successfully apply to Oxford. I was given one-to-one feedback and encouraged to better my knowledge of my course subject, and then to critically think about this and evaluate what I knew. I was constantly positively encouraged and felt supported. Specifically, the High Achievers’ enrichment was an essential aid in my journey, providing a nurturing environment where I was also able to practice and refine my skills with other students.”

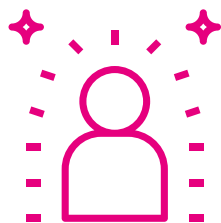
2023-24 Year 2 class: Salina, accepted to read Law at Mansfield College, Oxford

BRITISH VALUES AT WQE

All education providers and practitioners are required by the Prevent Duty to **demonstrate British Values** in their practice, use opportunities to explore British Values and challenge extremism. The Prevent Duty includes the expectation that all staff will encourage our students to respect other people, regardless of their differences. Fundamental British Values underpin what it is to be a citizen in modern, diverse Britain, through valuing our communities and celebrating diversity in the UK. British Values are:



DEMOCRACY



INDIVIDUAL LIBERTY



MUTUAL RESPECT
AND TOLERANCE



THE RULE OF LAW

British Values also incorporate the **9 protected characteristics** outlined in the Equality Act 2010, to ensure that discrimination against those with these protected characteristics is prevented:

AGE

MARRIAGE AND CIVIL PARTNERSHIP

RELIGION OR BELIEF

DISABILITY

PREGNANCY AND MATERNITY

SEX

GENDER REASSIGNMENT

RACE

SEXUAL ORIENTATION

At WQE, we believe that effective learning and work takes place in classrooms, workshops, and workplaces where there is tolerance and mutual respect for different faiths and beliefs, respect for people with protected characteristics and an awareness of the need to ensure that no one is discriminated against. By maintaining high standards of behaviour and encouraging all to respect the protected characteristics, British Values will be promoted by both staff and students.

British Values is embedded across all aspects of the curriculum at WQE, with the aim of creating a respectful, welcoming and thriving college community. The Prevent Duty plays a key role in challenging extremism, but it is not intended to stop our students debating controversial ideas in a safe environment, in a professional and respectful way.

We are proud to deliver the Prevent Young Leaders Programme in collaboration with our Department for Education Prevent Lead and the St Phillips Centre. This allows students the opportunity shape college Prevent strategy and lead our whole college Prevent events. This provides superb preparation for being a young professional.



We welcome parents and carers to engage in and discuss our college British Values through parent/carers forums and parents events throughout the year.