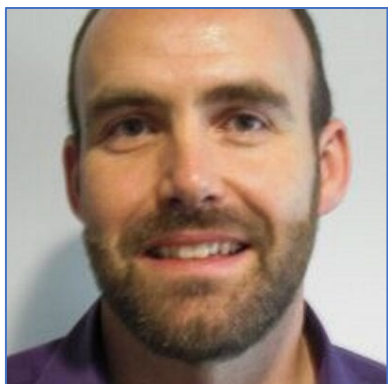


WQE Virtual Events
June 2024

PROGRESSION EVENT

wqe | Wyggeston &
Queen Elizabeth I
College

YOUR HOSTS



Andrew Jackson
Associate Principal
– Curriculum &
Progression



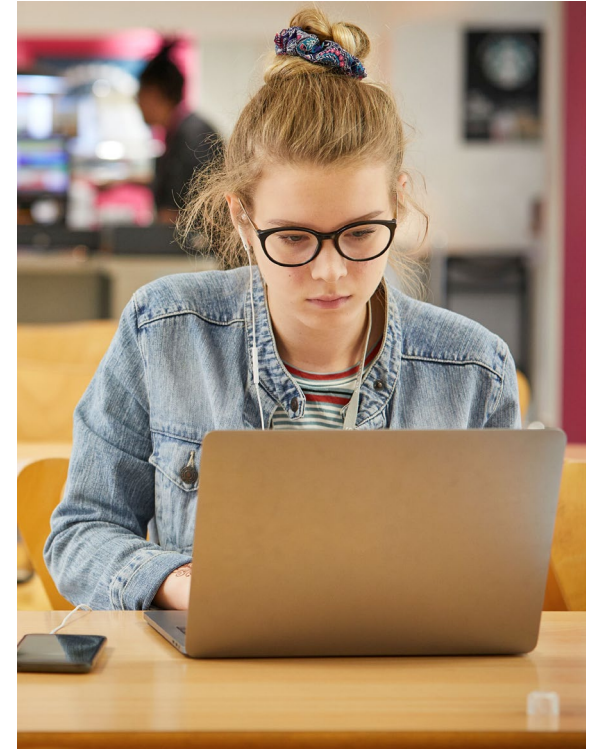
Kate O'Farrell
Careers Education
Manager



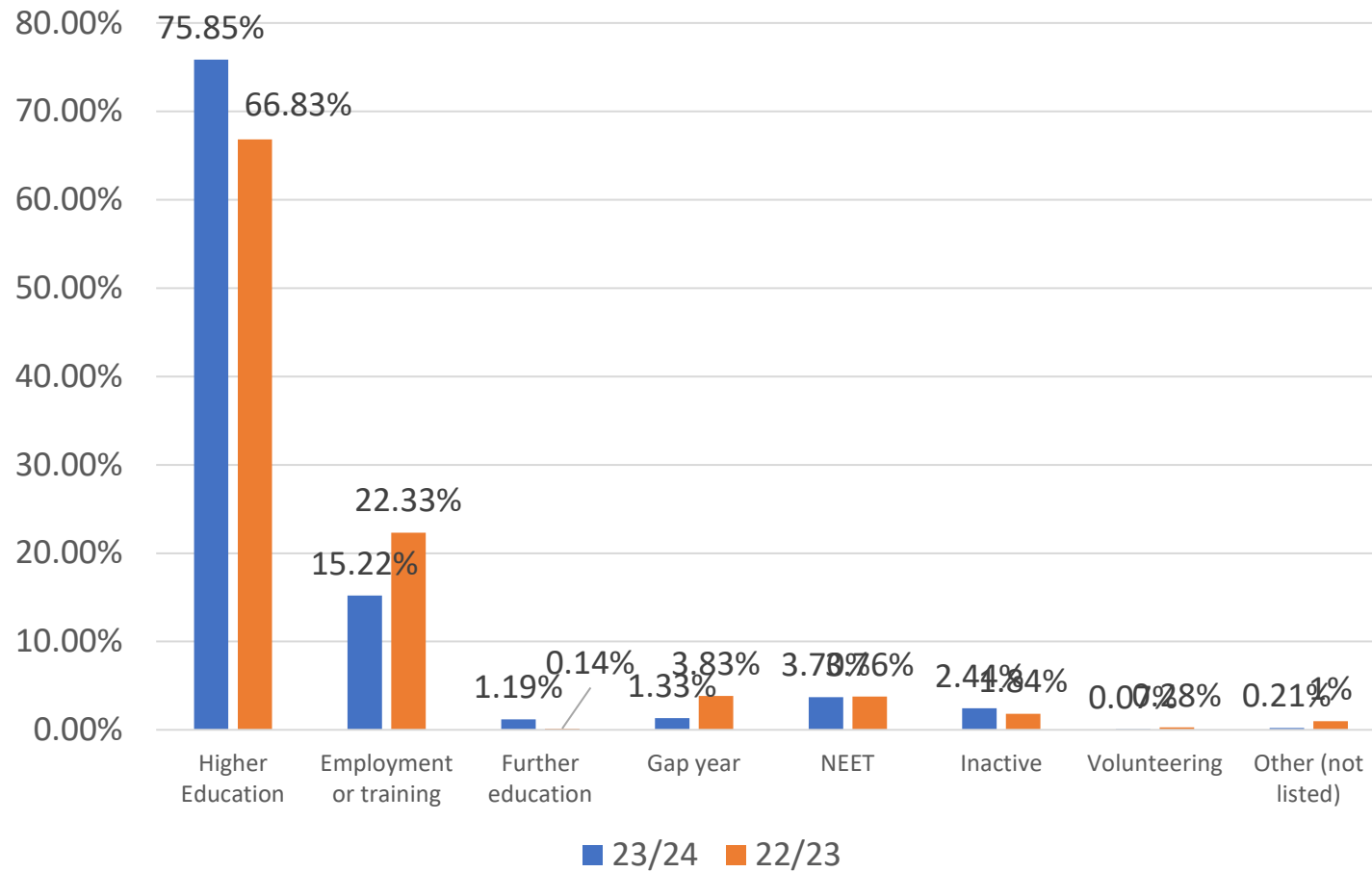
Rakesh Naik
Head of Studies

WHAT WE WILL COVER

- Summary of 2023 – WQE student destinations
- The UCAS process (including the internal process and deadlines)
- Specialist courses and institutions – how and when to apply
- Advice for students considering a year out
- Alternative options including Higher/Degree Apprenticeships
- Useful Websites
- Any questions?



SUMMARY OF 2023

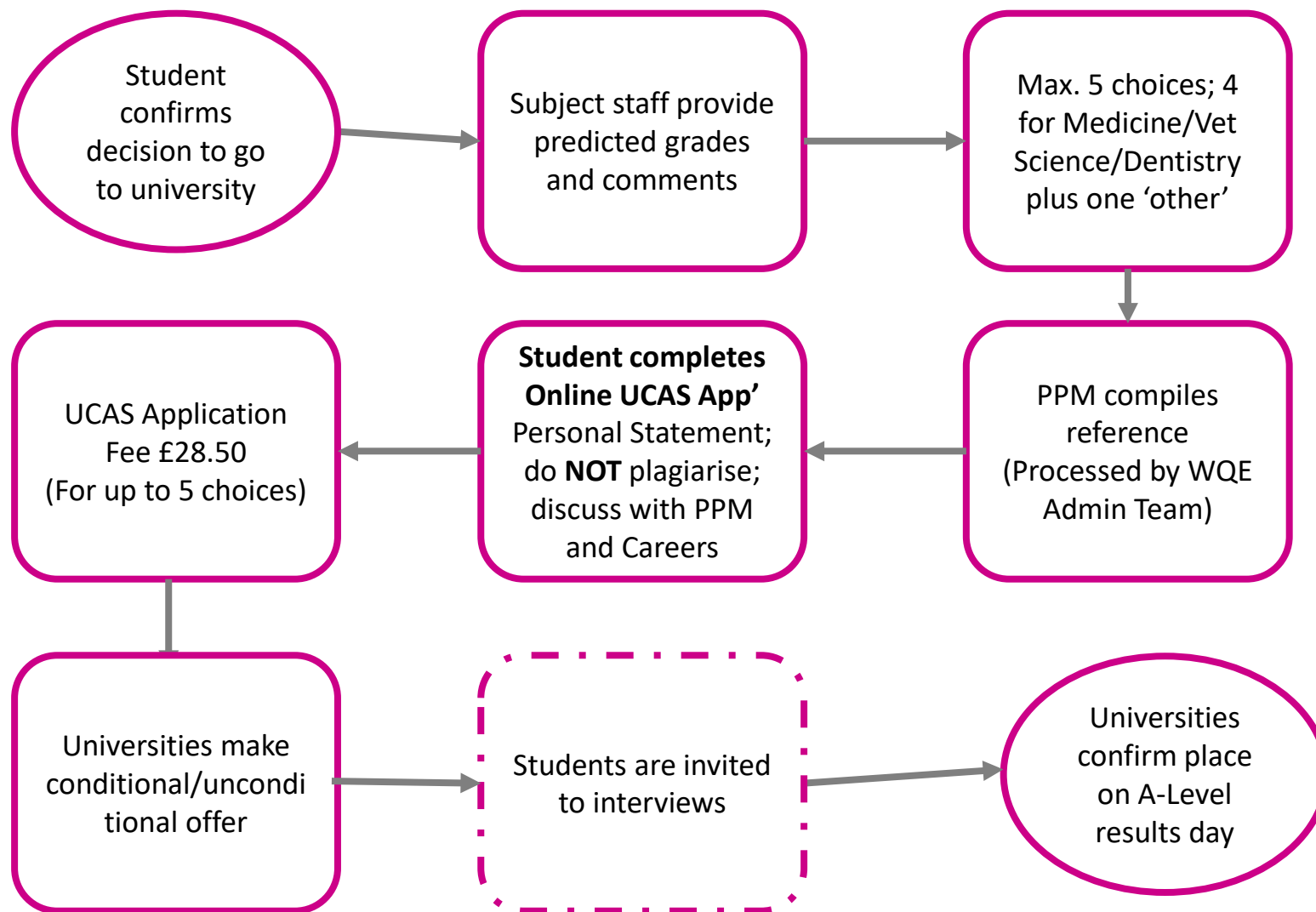


SUPPORT AVAILABLE TO STUDENTS CONSIDERING UNIVERSITY?

PPM Support	Careers Service	Regular careers updates	One to one meetings with Careers Team
WQE Careers Fair	HE Exhibition	FutureWise 26 th June 2024	UCAS website Info and advice
Opendays opendays.com/calendar	WQE visits to university's	University Websites 'Course profiles'	UCAS apply 2025 NOW open



THE UCAS PROCESS



DEADLINES

- Early applications – 13th September 2024, 16:00pm
- Applications to competitive universities and courses – 1st November 2024, 16:00pm
- All other courses and universities – 22nd November 2024, 16:00pm



UCAS PROCESS

- Conditional/Unconditional offers? Rejection?
- Invitation for interviews?
- Medical/Dentistry/Vet Science & Oxbridge mock interview support at College
- System continues until all offers completed – April/May/June 2025
- Art Foundation get the same support – details published



UCAS advice and information www.ucas.com

SPECIALIST COURSES

Practice based
music, dance,
drama, musical
theatre courses

Conservatoires
or Drama
Schools

<https://www.ucas.com/conservatoires/studying-conservatoire/thinking-about-performing-arts>

Applications
supported by
PPMs and
subject teachers

Deadlines can be
earlier

Requirement for
auditions



CONSIDERING A YEAR OUT

There are different ways of accessing & using the UCAS system. There is no 'preferred' way of doing this.

It depends on the needs & plans of each individual.

Deferred entry – Apply using Apply 2025 but in point of entry indicate 2026 entry.

Applying post results – apply after results in August 2025 or at anytime in that academic year.



PROS & CONS

Deferred

The positives:

- Place secured before Gap Year started
- Plans in place
- Easier to access support through College
- Cost is at 2025 Apply rate

But....:

- Year out and/or results may change things – means possibly reapplying anyway

Apply 2026

The positives:

- Grades known so can be matched to profile
- Longer to make the right decision

But....:

- Could be away and not able to attend Open Days/interviews
- Remote access needed for decision making
- Only chance of 2025 entry is through late Clearing – limited options



ALTERNATIVE OPTIONS

**Higher Technical
Qualifications**
(HTQ's)

Higher Education
in Further
Education

Year in industry

Apprenticeships
(Advanced/Higher
degree)



HIGHER/DEGREE APPRENTICESHIPS

About Higher/Degree Apprenticeships

- Launched 2009
- Proposed growth area (but still smallest)
- Mixture of on the job experience and academic learning
- Salary and all education costs paid for

What you need to know

- Entry requirements – 18+ and UCAS points+
- Competitive
- When to apply/the application process
- Support at WQE



USEFUL WEBSITES

For information about Apprenticeships & vacancies -

[Not going to Uni](#)

[National Apprenticeship site](#)

[Milkround for school leavers](#)

[All about school leavers](#)

[Get my first job](#)

[The Apprenticeship Guide](#)

[UCAS](#)

Higher and Degree Apprenticeship listing



CONTACTS AT WQE

Individual Personal Progress Mentors (PPM's)

First point of call for all support

WQE Careers Service

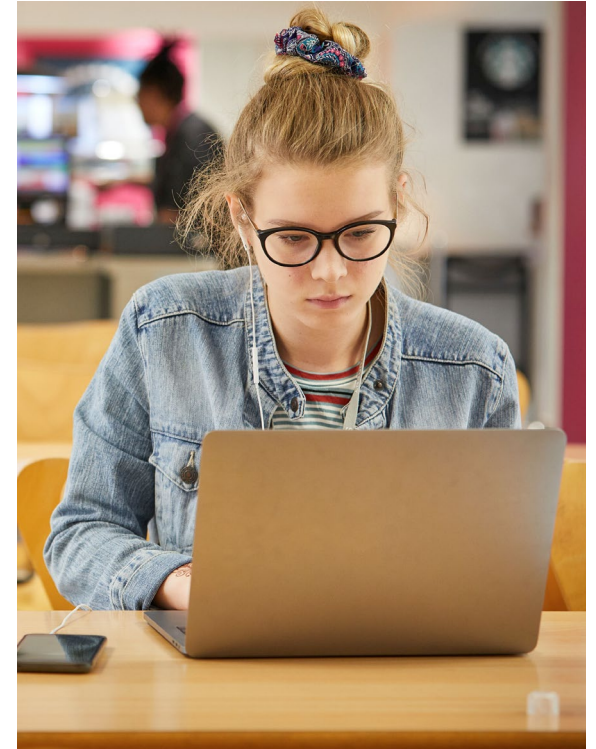
careers@wqe.ac.uk

Heads of Studies

Rakesh.naik@wqe.ac.uk

Associate Principal

Andrew.Jackson@wqe.ac.uk



Student Finance overview

Faye Wickham

Schools and Colleges Team

De Montfort University





Any questions