

STAYING SAFE DURING THE HOLIDAYS

We are aware that some members of our college community may require more support at the moment due to post-pandemic challenges and the cost of living crisis. We believe it is our moral imperative to do everything we can to support our college community through these testing times. We have created the following booklet for your use during the College Summer break. This booklet contains a wealth of information to ensure that you can access vital advice quickly and easily when you need it most. We are proud to offer all students and their families our Health Assured Support Service 24 hours a day, 7 days a week and 365 days a year both online and using their freephone number (more information can be found within this booklet). We understand that emergencies do not always occur during normal working hours.

We encourage all students to reach out to us when they are experiencing challenges. When college is open, we have a dedicated safeguarding freephone number **0800 061 4222**, please use this for raising any safeguarding concern, no matter how small it may seem.

We also offer a wide range of academic and welfare services, tailoring support to individual need. We have a long established strong safeguarding and welfare culture at WQE and never has it been so important to take care of each other.

A reminder that teaching starts on 5th September 2024.

We wish you a safe and restful break.

Donna Trusler
Associate Principal (Students and Welfare)



COST OF LIVING SUPPORT

Find out what support is available to help you and your family get through the cost-of-living crisis.

CITIZEN'S ADVICE BUREAU (CAB)

You don't have to be a UK citizen to get support from your local CAB, you just need to be a resident of the local area. The CAB can help you with:

- Getting benefits or organising other financial support
- Accessing support for essential costs (food, bills, rent)

Visit the Citizens Advice website or contact your local branch to book an appointment.



SCAN HERE TO
ACCESS THE
CITIZENS ADVICE
LEICESTERSHIRE
WEBSITE

**CITIZENS ADVICE LEICESTERSHIRE IS
CLOSED ON MONDAY 26TH AUGUST FOR
THE BANK HOLIDAY.**

FAMILY HUB

Contact your local Family Hub to get help accessing all the support you might need as a family.

SCAN HERE TO
FIND YOUR LOCAL
FAMILY HUB



CHECK YOU'RE PAYING THE RIGHT AMOUNT OF TAX

Make sure you're on the right tax code. If you aren't, you might be due a refund. Use the Money Saving Expert's free tax code calculator to find out.

CLAIM ANY BENEFITS YOU'RE ENTITLED TO

Use one of these benefits calculators to determine if there are any benefits you could be claiming:

- Turn2us
- Policy in Practice
- Support for migrant families – use this calculator if you are a migrant family, or if you have no recourse to public funds (meaning you're not entitled to the majority of welfare benefits)

You may be able to get benefits paid early if you need cash urgently – this is known as 'a short-term benefit advance'. You will need to contact the Department for Work and Pensions (DWP) office that's dealing with your claim.



SCAN HERE TO
ACCESS THE
BENEFITS
CALCULATORS LISTED
THROUGH THE GOV.UK
WEBSITE

COST OF LIVING SUPPORT

CHECK YOU'VE RECEIVED ALL THE GOVERNMENT'S COST-OF-LIVING PAYMENTS

The government's cost-of-living payments are available for those receiving certain benefits or tax credits. You don't need to apply for these – if you're eligible the money should go straight into your account.

If you think you're due a payment but haven't received one, report a missing payment to the government here.



Be aware of scams! If you receive any emails, texts or phone calls asking you to fill in an application form or asking for your bank details to receive a cost-of-living payment, do not talk to them or send a reply.

Get more information on cost-of-living scams on the Money Saving Expert's website, www.moneysavingexpert.com

FIND OUT WHAT HELP YOU CAN GET WITH YOUR ENERGY BILLS

Take a look at these resources from the British Gas Energy Trust and the Money Saving Expert.

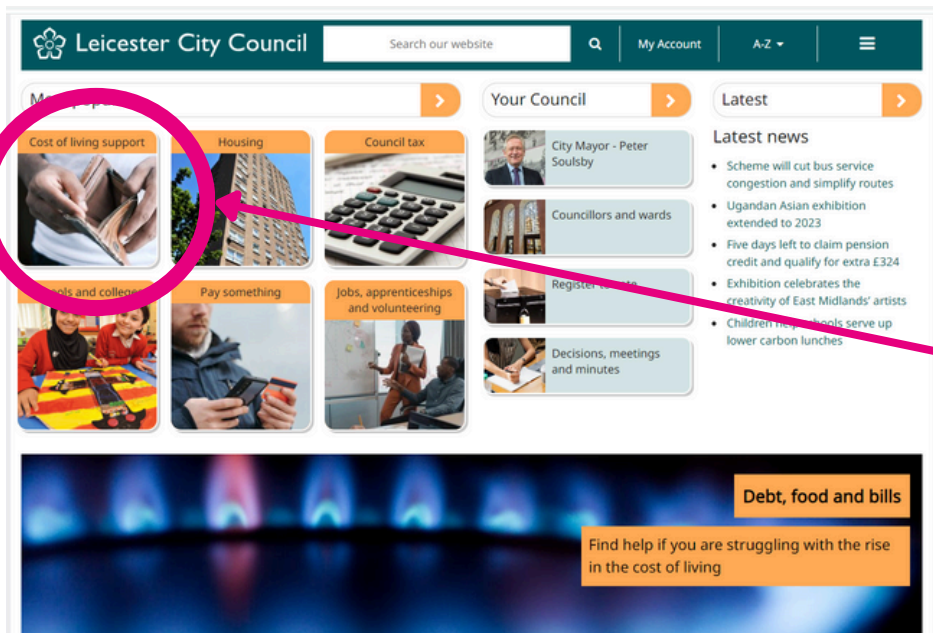
SCAN HERE TO ACCESS THE
'BOUNCE BACK CHECKLIST' FROM
BRITISH GAS



SCAN HERE TO ACCESS
AN 'ENERGY MYTH
BUSTING' ARTICLE FROM
MONEY SAVING EXPERT



SEE WHAT OTHER SUPPORT YOU CAN GET FROM YOUR LOCAL AUTHORITY



The Leicester City Council Website includes sections providing specific support and guidance on additional support available during the Cost of Living Crisis.

Access the website via www.leicester.gov.uk

LET US KNOW IF YOU'RE IN FINANCIAL DIFFICULTY

We know that many families are going through a tough time and we want to do everything we can to help you. If you're struggling with your finances, please get in touch to let us know, as there may be things we can suggest which will help. Email us at student.services@wqe.ac.uk

16-19 BURSARY FUND

The 16-19 Bursary Fund is a means-tested fund available to provide help with the extra costs incurred by deciding to stay in education. Your household income needs to be £33,000 or less in order to qualify. Please note that household income is the total amount of earned income plus any benefits received. It is available to students:

- aged 16-18 at the start of their course
- aged 19-24 who have an Education Health Care Plan (EHCP)

A new application must be made at the start of each academic year and recent relevant evidence will need to be provided to support that application. The amount of money the government awards the college for the 16-19 Bursary Fund changes each year. As a result, the financial support available annually to individual students is dependent on the funding allocation received and the number of eligible students.

To find out more about our bursary, please visit our website at www.wqe.ac.uk. Further information about the bursary application process for the next academic year will be sent to your student email in due course.

FREE HYGIENE PRODUCTS

At WQE, we work alongside The Department for Education's (DfE) Period Product scheme to provide free period products to young people who need them in schools and colleges across England. It is also worth being aware that food banks may offer free toiletries and sanitary products. We have listed information regarding local and national food banks later in this booklet.

Free sanitary products are also available at a number of the council's Children, Young People and Families Centres (CYPFCs). Tampons and sanitary pads are available free of charge from the toilets at all 12 CYPFCs, listed below.

CENTRAL

St Matthews

34 Vancouver Road, Leics, LE1 2GA (0116 2426370)

Highfields

20 Barnard Close, Leics, LE2 0UZ (0116 2946200)

NORTH

Belgrave and Rushey Mead

Cossington Street, Leics, LE4 6JD (0116 2914604)

Woodbridge

54A Woodbridge Road, Leics, LE4 7RG (0116 2211760)

NORTH WEST

Beaumont Leys and Stocking Farm

20 Home Farm Walk, Leics, LE4 0RW (0116 373 7350)

Bewcastle

Bewcastle Grove, Mowmacre Hill, Leics, LE4 2JY (0116 221 1199)

SOUTH

Saffron

The Crossway, Leics, LE2 6QW (0116 2221810)

Eyres Monsell

Hillsborough Road, Leics, LE2 9PT (0116 2252200)

EAST

Thurnby Lodge

Dudley Avenue, Leics, LE5 2EG (0116 2924590)

Netherhall

New Romney Crescent, Leics, LE5 1NH (0116 2924540)

WEST

Braunstone

Gallards Hill, Leicester, LE3 1QR (0116 3737150)

New Parks

Pindar Road, Leicester, LE3 9RN (0116 2293257)

STAYING SAFE AND HEALTHY

LOOKING AFTER YOUR PHYSICAL HEALTH

COOKING ON A BUDGET

There are loads of ways to save money whilst still eating healthy and delicious food. The internet and social media is crammed full of tasty ideas that can help you save money without compromising on flavour. We've included some examples here for some fabulous articles on how to cook well on a budget, including vegan and vegetarian options.

Cooking on a budget is also all over social media, and you can find fantastic ideas and guides on Tiktok, Instagram, Snapchat and more.



LOCAL FOOD BANKS

There are also many food banks available should you need them. Use the Trussell Trust website to find your nearest - we've included some local ones below.

Leicester South

The Kings Centre, 56 Bull Head Street, Wigston, LE18 1PA

Loughborough

New Life Community Church, 2 De Montfort Close, LE11 4RL

Coalville

New Life Church, Margaret Street, LE67 3LY

Hinckley

Hope Community Church, Deveron Way, LE10 0XD

Lutterworth and Villages

Church Gate Centre, Church Gate, Lutterworth, LE17 4AN

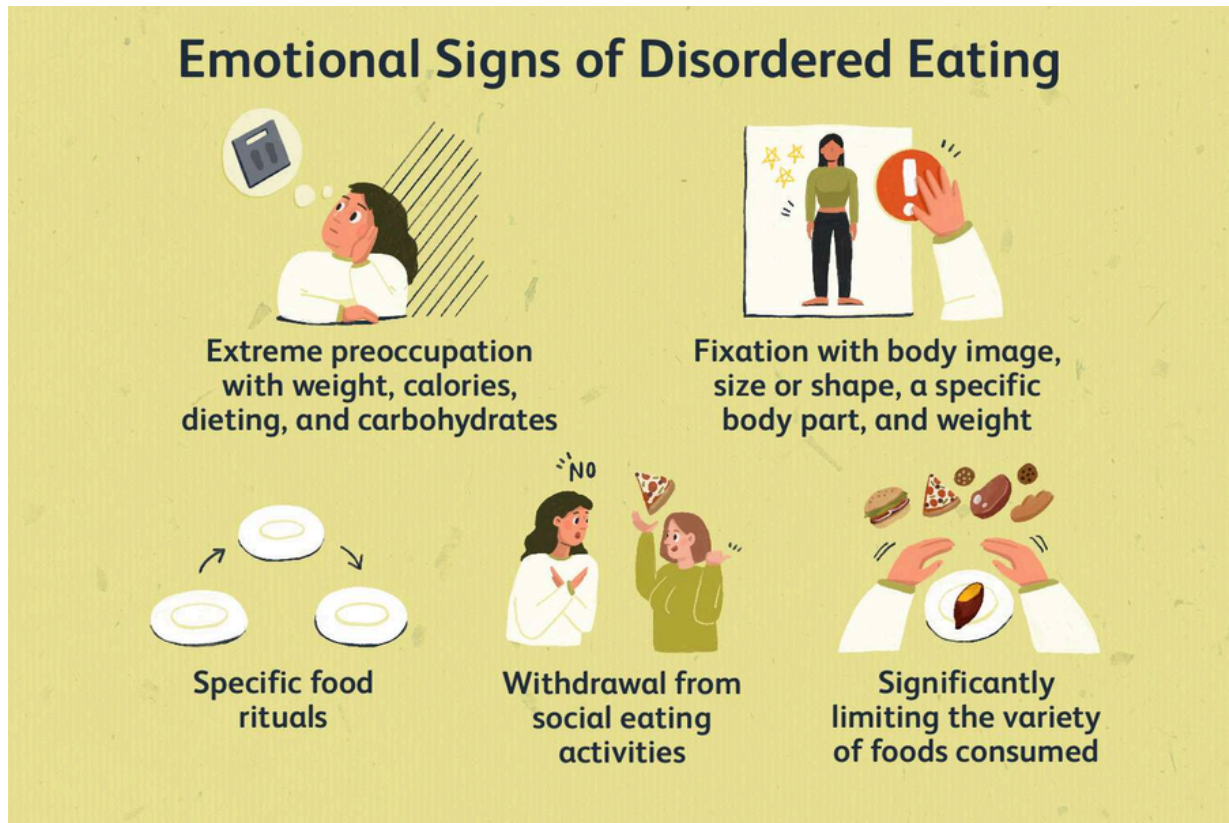
Rutland

Rear of 40 Melton Road, Oakham (Behind Rutland Radio, at the back of Westgate Car Park), LE15 6AY



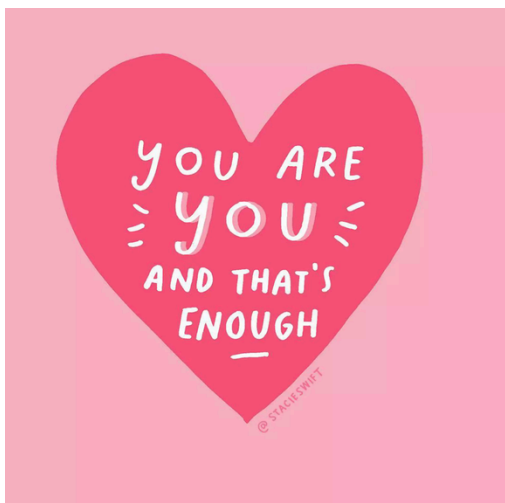
SCAN HERE TO
FIND YOUR
NEAREST FOOD
BANK

HOW TO SUPPORT YOUNG PEOPLE WITH 'DISORDERED EATING'



The lack of routine during the holidays can lead to 'disordered eating'. By this we mean straying away from the recommended '3 meals a day plus snacks'. It could be that a lie-in disrupts your timings for the day, or that you choose to graze/snack throughout the day instead of eating meals at specific times. This would be considered 'disordered eating', but there are other symptoms that may go alongside this that should be monitored (see above).

If 'disordered eating' continues for an extended period and is accompanied by such thoughts and behaviours as listed above, this could suggest the early stages of developing an eating disorder. Further information, signs and behaviours to look out for a on the next couple of pages, and Young Minds have created a specific resources to help give advice and guidance to those living with or supporting someone living with a diagnosed eating disorder.



SCAN HERE TO READ THE FULL SUPPORT GUIDE FROM YOUNG MINDS FOR YOUNG PEOPLE WITH EATING PROBLEMS.

THERE'S SOME REALLY USEFUL INFORMATION FOR PARENTS, CARERS AND FRIENDS ON THERE TOO!



Eating disorders.

Know the first signs?



Lips

Are they obsessive about food?



Flips

Is their behaviour changing?



Hips

Do they have distorted beliefs about their body size?



Kips

Are they often tired or struggling to concentrate?



Nips

Do they disappear to the toilet after meals?



Skips

Have they started exercising excessively?

If you're worried someone you care about is showing any signs of an eating disorder – even if they're not on our list – act quickly and get in touch. We can give you the answers and support you need to help them on the road to recovery as soon as possible.

Don't delay. Visit beateatingdisorders.org.uk/tips



**Beat is the UK's eating disorder charity.
We are a champion, guide and friend
for anyone affected by an eating disorder.**



Help for adults

Helpline: 0808 801 0677

Email: help@beat
eatingdisorders.org.uk



Help for young people

Youthline: 0808 801 0711

Email: fyp@beat
eatingdisorders.org.uk



Help for students

Helpline: 0808 801 0811

Email: studentline@beat
eatingdisorders.org.uk

Online support

Visit beateatingdisorders.org.uk for information about eating disorders, online support groups and one to one chat.

Use helpfinder.beateatingdisorders.org.uk to find services in your area.

 [@BeatEDSupport](https://twitter.com/BeatEDSupport)  [BeatEDSupport](https://www.instagram.com/BeatEDSupport)

General enquiries

Unit 1, Chalk Hill House, 19 Rosary Road, Norwich NR1 1SZ

0300 123 3355 | beateatingdisorders.org.uk

info@beateatingdisorders.org.uk

 [@beatED](https://twitter.com/beatED)  [beat.eating.disorders](https://www.facebook.com/beat.eating.disorders)

A charity registered in England and Wales (801343) and Scotland (SC039309). Company limited by guarantee no. 2368495.



STAYING SAFE AND HEALTHY

MAINTAINING SAFE AND HEALTHY RELATIONSHIPS



SUPPORTING
YOUR SEXUAL
HEALTH



The Leicester Sexual Health clinics offer a range of services including:

- Sexually Transmitted Infection (STI) Screening and Treatment Services
- Free Pregnancy Testing to those aged 18 and under.
- Contraception: Information, advice and issuing a range of contraceptive options including free condoms and C-Card Scheme.
- Emergency Contraception: Emergency hormonal contraception (the morning after pill) or coil insertion if you have had unprotected sex. Referral and support to termination of pregnancy services.
- HIV PEP and PREP: Information, advice and assessment for Post Exposure Prophylaxis, if you think you've been exposed to HIV.
- Psychosexual Counselling: A service for those aged 16+ referred via their GP for the management of problems such as lack/loss of libido and sexual performance.
- Domiciliary Services: A specialist service for those who may find it difficult to access a GP practice or sexual health service for contraception advice and/or treatment.

HAYMARKET HEALTH

1st Floor, Haymarket Shopping Centre Leicester LE1 3YT

- Monday: 8:15am-7pm (Last appointment at 6:15pm)
- Tuesday: 8:15am-7pm (Last appointment at 6:15pm)
- Wednesday: 8:15am-7pm (1:30pm-7pm aged 18 and under only)
- Thursday: 8:15am-7pm (4:45pm-7pm: Male-only booked appointments)
- Friday: 8:15am-7pm (Last appointment at 6:15pm)
- Saturday: 10am-4pm (Last appointment at 3:15pm)
- Sunday: Closed (also closed on bank holidays)

For an appointment, please call 0300 124 0102 or book online.

Please note that NHS patients, staff and visitors must continue to wear face coverings and follow social distancing measures in healthcare settings, unless they are unable to do so for medical reasons. Please also attend your appointment alone, this includes no children or babies.

HOW TO FIND US

Our Haymarket clinic is situated inside the Haymarket Shopping Centre, on the first floor, between the two lifts. We are directly opposite Primark and our sign says 'Haymarket Health'.

GENERAL INFORMATION

Main switchboard & general enquires:

0300 124 0102

Lines are open:

- Monday to Friday: 8:30am – 5:30pm
- Saturday: 10:30am – 3:00pm
- Sundays and Bank Holidays: Closed



Freeva is a registered charity working towards reducing domestic violence, rape and sexual assault in Leicester, Leicestershire & Rutland. Their vision is to aspire to live in a society where everyone is free from violence and abuse.

They aim to do this by:

- Empowering and supporting victims of domestic and sexual violence/abuse
- Challenging abusive behaviours and supporting perpetrators that wish to change.
- Breaking the cycle of violence and abuse
- Building cohesive families and communities

Their priority is to provide high quality effective support to victims and perpetrators irrespective of their backgrounds. We have included their comprehensive information leaflet on the following pages.

HELPLINE & SERVICES UPDATE

The existing helpline number for both members of the public and professionals , **0808 80 200 28** is freephone (and hidden from bills) and open 8am - 8pm Monday to Friday.

This is the main route to all domestic and sexual violence services.

Please be aware - Freeva are currently operating a reduced service on weekends and Bank Holidays:

10am - 4pm – Saturday & Sunday / 10am – 4pm on Bank Holidays

**THE 24-HOUR NATIONAL
DOMESTIC ABUSE HELPLINE**

0808 2000 247

FOR A FULL LIST OF
SUPPORT AVAILABLE,
SCAN QR CODE BELOW



TO ACCESS THE ONLINE
REFERRAL FORM
SCAN THE QR CODE BELOW



How do I access the service?

Who is Freeva?



We aim to provide a simplified service, which can be accessed by anyone who has been affected by domestic abuse and or sexual violence.

You do not need to report to the police to access our services.

HELPLINE: 0808 80 200 28
Monday to Saturday 8am – 8pm
ISVA Office: 0116 273 3330
For text support: 07715 994 962
www.freeva.org.uk

Outside of these hours you can contact the SARC (Sexual Assault Referral Centre) which has a 24hr voicemail service please leave a message and your call will be returned

Specialist Independent
Sexual Violence
Advisory Support
(ISVA)



Juniper Lodge SARC
0116 273 3330

In an emergency please contact the Police on 999 and you will be supported by a specialist trained police officer.

Our services are free and confidential and available to anyone, regardless of gender, living in Leicester, Leicestershire or Rutland.

If you have experienced rape or sexual assault and would like to speak to someone in confidence to discuss the support that is available, including your reporting options we are here to help.

We recognise that domestic abuse is strongly linked to rape and sexual assault. If you have been assaulted by your partner, ex-partner, or a member of your family, support is available to you. Please contact the Helpline team.

The Helpline is a confidential, freephone number that allows callers to access information and the support services in Leicester, Leicestershire and Rutland. Our specially trained staff can assess any risks to you, offer personal and family safety advice and make referrals to specialist services.

You do not need to report the abuse/assault to the police to get support from an ISVA

Our Independent Sexual Violence Advisers (ISVA) are specially trained workers who are independent from the police and other statutory services. The role of an ISVA is to offer practical and emotional support to anyone who has been raped, sexually assaulted or abused, including grooming and exploitation (CSE), whether this happened recently or in the past.

We recognise that sometimes it may be difficult to speak about your experiences with others. We can help you to liaise with other agencies such as the police and medical teams to ensure that you are able to access the necessary support in your own time.

We would also carry out safety planning and explore with you your rights regarding the support available.

The aim of our work is to listen, encourage and empower you, enabling you to openly express your feelings within a confident and safe setting. We will provide you with information to help in your recovery without overwhelming you.

We work closely with our local SARC team (Sexual Assault Referral Centre) who can help you to access medical support, regardless of whether you wish to report to the Police or not.

- We can help you and your children to stay safe through immediate crisis intervention, including supporting you with medical examination, other health needs and housing where necessary.
- We can help you and your children to feel safe in your own home through additional safety measures or move to somewhere safe.

Every person's reaction to rape and sexual abuse will be different. A common myth around rape is that everyone will react hysterically or tearfully after the assault. In reality however, people can experience a mixture of different emotions in the immediate aftermath of the incident, or in the hours, days, even years that follow.

Some of the symptoms you may experience or be experiencing are:

- Constant anxiety
- Fear and shock
- Being on edge and easily startled
- Nightmares
- Sleeping and/or eating difficulties
- Feelings of shame and self-blame
- Health related issues
- We can liaise with the police only if you want and support you through the investigation.
- The ISVA will work with you if you do not wish to report to the police, but need help identifying what support you may need.
- We will explore your legal options and can support you throughout the court processes.
- We can link you and your children with other support agencies such as specialist counseling and therapy, family related support and also help you to develop support network.
- We can provide emotional support, which can include referrals for additional emotional support from counselling agencies.

COPING WITH LOSS

Cruse is the leading national charity for those who have been bereaved, and offer a range of services. Young Minds is the UK's leading charity fighting for children and young people's mental health, and their website is full of resources and support guides for young people who are experiencing mental health challenges, but also guidance for those supporting them during their recovery.

Cruse Bereavement Support

Cruse Bereavement Care is the leading national charity for bereaved people.

Cruse offers face-to-face, group, telephone, email and website support. We have a Free phone national helpline and local services throughout England, Wales and Northern Ireland. Our website Hope Again provides support for young people. Our services are provided by trained volunteers and are confidential and free.

For help and support and for details of your local Cruse service:
www.cruse.org.uk

National helpline 0808 808 1677

(Mondays and Fridays 0930-1700,
Tuesdays, Wednesdays and
Thursdays 0930-2000)

Email - helpline@cruse.org.uk

For children and young people
www.hopeagain.org.uk

This information was supplied by
Cruse Bereavement Care on 7
December 2022.

YOUNG MINDS

fighting for young people's mental health



People tend to believe that grief shrinks over time



What really happens is that we grow around our grief

'WHEN YOU LOSE SOMEONE CLOSE TO YOU, IT'S NATURAL TO FEEL SAD, DEPRESSED, WORRIED OR ANGRY. EVERYONE REACTS IN THEIR OWN WAY. IF YOU'RE FINDING IT HARD TO COPE WITH BEREAVEMENT, WE CAN HELP YOU FIND SUPPORT.'

- YOUNG MINDS



**SCAN HERE TO
READ MORE ABOUT
LOSS AND GRIEF ON
THE YOUNG MINDS
WEBSITE**

THE FOLLOWING PAGE LISTS A RANGE OF BOTH LOCAL AND NATIONAL SUPPORT SERVICES WHO CAN HELP YOU AND YOUR FAMILY WHEN COPING WITH THE LOSS OF A LOVED ONE.

AGE UK Leicestershire & Rutland

Phone: 0116 299 2233

National helpline: 0800 009966

Website: www.ageuk.org.uk

AL-ANON FAMILY GROUPS UK

help and support for families and friends of those who have died of alcohol related illness.

Phone: 020 7403 0888

Website: www.al-anonuk.org.uk

COPING WITH CANCER

counselling, befriending services, disease specific support groups and complimentary therapies to anyone affected by cancer within Leicester, Leicestershire and Rutland. They also run a solicitor's surgery if you are struggling with any legal issues or would like some advice. You may refer yourself, a friend or ask your GP to make a referral.

Phone: 0116 223 0055

Website: www.c-w-c.org.uk

THE COUNSELLING DIRECTORY helps people to find a private counsellor.

Website: www.counselling-directory.org.uk

THE LAURA CENTRE

counselling for parents and carers of children who have died, and counselling to children who have lost a parent. Their website also gives information relating to needs which may be specific to bereaved children and teenagers.

Phone: 0116 254 4341

Website: www.thelauracentre.org.uk

LEICESTER COUNSELLING CENTRE

a charity aiming to provide affordable, high quality counselling to those living in Leicestershire & Rutland.

Phone: 0116 255 8801

Website: www.leicestercounsellingcentre.co.uk

THE SAMARITANS are available 24 hours a day to provide confidential emotional support for people who are experiencing feelings of distress or despair, including those which may lead to suicide.

Phone: 0116 270 0007

National helpline: 08457 909090

Website: www.samaritans.org.uk

THE SHAMA WOMEN'S CENTRE

free bereavement counselling support to women with emphasis on minority ethnic communities. They have multi-lingual staff.

Phone: 0116 262 5876 (to book a confidential counselling session)

Phone: 0116 251 4747 (for general enquiries)

SURVIVORS OF BEREAVEMENT BY SUICIDE

a self-help group that offers support to families and friends of those who have committed suicide.

National helpline: 0300 111 5065

Website: www.uk-sobs.org.uk

stem4's mental health apps



A free app to help teenagers resist or manage the urge to self-harm
www.calmharm.co.uk • @calmharmapp



A free app to help children and young people manage the symptoms of anxiety
www.clearfear.co.uk • @clearfearapp



A free app to help teenagers manage low mood and depression
www.movemood.co.uk • @appmovemood



A free app to help families and friends provide mental health support
www.combinedminds.co.uk • @combmindsapp



A free app to help young people manage negative body image, poor self-worth, and related early-stage eating difficulties or disorders
www.worthwarrior.co.uk • @worthwarriorapp

stem4's award-winning apps are available to download from the App Store and Google Play.



Please note that these apps are an aid in treatment but do not replace it.

stem4
supporting teenage mental health

www.stem4.org.uk • @stem4org

Developed by stem4 - Registered Charity No. 1144506

LOOKING AFTER YOUR MENTAL HEALTH

HEALTH FOR TEENS



SCAN HERE TO VISIT
THE WEBSITE

Health for Teens introduces a new and different way for young people aged 11-19 to learn about their health. This website is a previous winner of the Association for Healthcare Communications and Marketing (AHCM) 'Best Website' award.



Mental Health Advice During the Cost-Of-Living Crisis

Two of our bloggers share their experiences of the cost-of-living crisis, the impact on their mental health, and tips for talking about money.

YoungMinds

Young Minds has created resources linked to the impact the cost of living crisis is having on our mental health.



SCAN HERE TO ACCESS
THE FULL RESOURCE

Patient/Carer Support Groups

Central Access Point (CAP) on 0808 800 3302:

Families can call the Central Access Point (CAP) on 0808 800 3302, 24 hours a day, 7 days a week and speak to a qualified call-handler if they require advice around urgent mental health concerns for children and young people. Please note however that the CAP line is not an emergency service. Where there is an immediate, serious and life-threatening emergency, call 999 or attend A&E.

Students have access to the Student Assistance Programme (SAP), who you can contact at any time - 24 hours a day, 7 days a week including during the holidays.

You can call the freephone number and speak to someone about anything concerning you - feelings of stress or anxiety, financial worries, relationship concerns or worries about your education. This helpline is confidential.

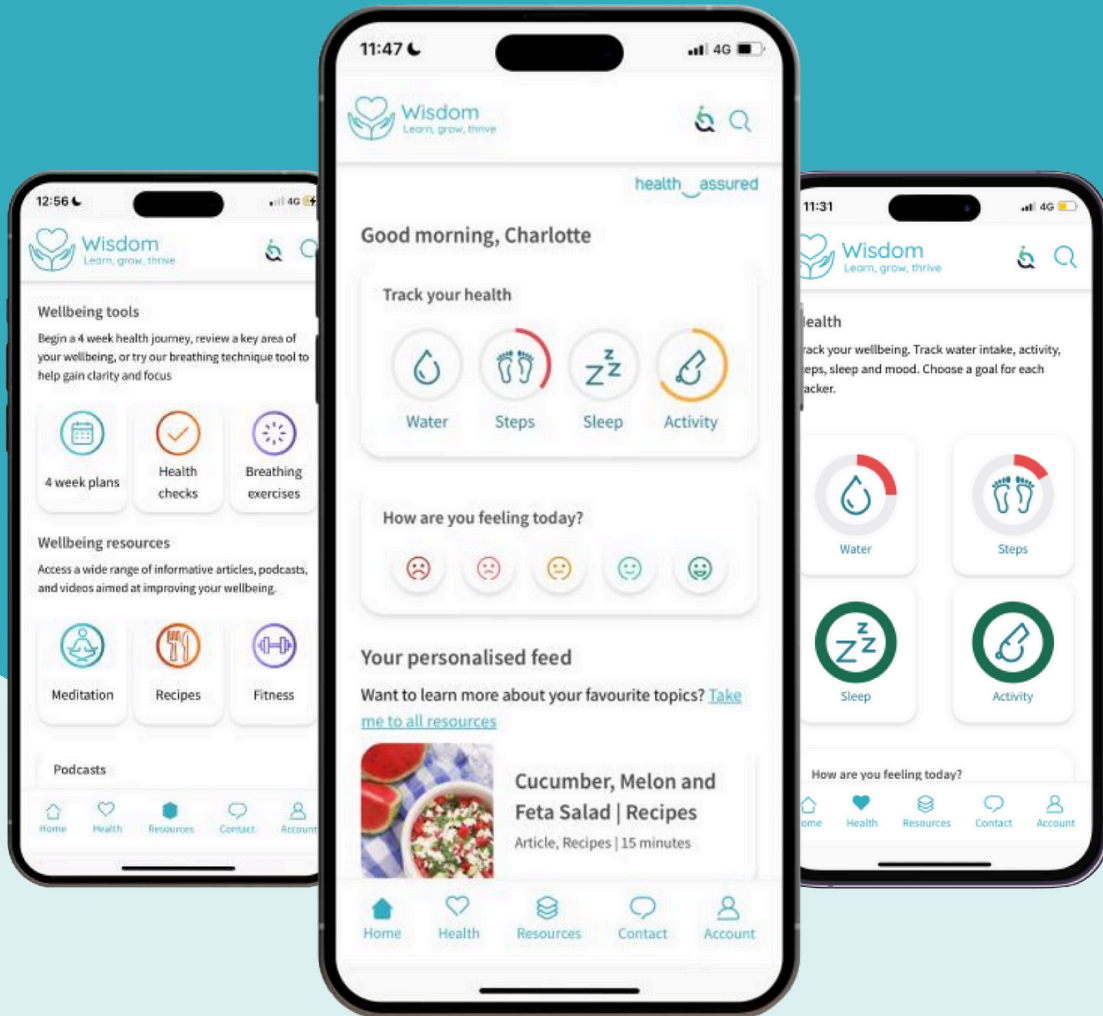
SAP HELPLINE: 0800 028 3766



Wisdom

Learn, grow, thrive

Brought to you by Health Assured



Exciting features available on The Brand New Wisdom App



Wellbeing
Trackers



Breathing
Techniques



Four Week
Health Plans



Mini Health
Checks

Download and register today
Wisdom | health assured

Unique code:

MHA196373



STAYING SAFE AND HEALTHY EMERGENCY HOUSING OPTIONS



First and foremost, Action Homeless offer accommodation to people and families in housing crisis. Our housing projects are arranged in three tiers with varying levels of support;

1. CRISIS ACCOMMODATION

We provide emergency housing to single people in crisis from three sites in Leicester (Mayfield House, The Hollies and Jarvis House). Our crisis accommodation is designed to help those who have multiple and complex needs and therefore require intensive support to help them to prepare for independent living. Referrals to this service can be made via the Local Authority's Single Access Referral Scheme (SARS). Rough sleepers can access emergency beds at Mayfield House through the No Second Night Out Leicestershire pathway by contacting Action Homeless directly.

For women and children fleeing domestic abuse or in housing crisis, our Bridge House project offers a safe and secure place to stay along with specialist support to help women to overcome trauma and prepare for independent living.

2. ACCOMMODATION ASSIST

Our second stage offer is high quality temporary housing for people who are homeless or threatened with homelessness and need a safe place to live whilst identifying more stable and permanent housing. Our accommodation across Leicester varies to include small shared houses, bedsits and self-contained flats. This accommodation is suitable for individuals and couples who still need a low level of support but have a degree of independence and are largely able to manage their own lives on a day to day basis.

3. ACCOMMODATION PLUS

Finally, Accommodation Plus offers longer term homes to people who are independent but may benefit from the social aspect of communal living. Our Accommodation Plus properties range from shared houses, self contained flats to family homes. With Action Homeless acting as the landlord, tenants benefit from the stability and security of having somewhere to call home for as long as they want it.

BUILDING BLOCKS

Funded by BBC Children in Need, Building Blocks is an Action Homeless project for very young children affected by homelessness. It offers play groups, family trips and parenting support for families with a child/children aged 0-4 years who have been affected by homelessness. Play sessions take place at various locations across Leicester and are open to any children who've experienced homelessness or unsettled housing situations.

CONTACT US

Call: **0116 221 1851**

Email: **info@actionhomeless.org.uk**

Address: **Action Homeless, Ridgeway House Little Hill, Wigston, Leicester LE18 3SE**

STAYING SAFE AND HEALTHY

WHO TO CONTACT IN AN EMERGENCY



Although we have included a range of local and national support options in this booklet, there may be times when an emergency response is required.

Here are the recommended responses to situations linked to medical or mental health emergencies, and when it is best advisable to call 999.



	Grazed knee. Sore throat. Cough. Stock your medicine cabinet.	Self-care
	Unwell? Unsure? GP surgery closed? Need help?	NHS 111
	Diarrhoea. Runny nose. Painful cough. Headache.	Pharmacy
	Vomiting. Ear pain. Stomach ache. Back ache.	GP surgery
	Choking. Chest pain. Blacking out. Blood loss.	A&E or 999 Emergencies only

Mental Health

Where to find the right support in Leicester, Leicestershire & Rutland for you or someone you care about

Non-Urgent	Contact your GP Practice from 8am-6.30pm, Monday to Friday. Call 0330 094 5595 for VitaMinds (talking therapy service).
Urgent	*Call the Mental Health Central Access Point Freephone 0808 800 3302 24 hours a day, seven days a week. Call NHS 111 for physical, medical and mental health issues. Visit a Crisis Café. Full list of venues on our website: www.leicspart.nhs.uk/contact/urgent-help
Emergency	Call 999 if there is a physical threat to life.

Delivered in partnership with

TURNING POINT CALL 111 vita health group Step up to Great Mental Health

If you would like this poster in a different language or format such as large print, Braille or audio, please visit Urgent mental health help - Leicestershire Partnership NHS Trust (leicspart.nhs.uk)