

# Welcome to all Parents and Carers



**Paul Wilson**  
Principal



# A Different Phase

- September is just the beginning – 37 weeks
- Stepping stone from school to HE, or work
- Growing independence & changing relationships
- Managing freedoms & responsibilities



- Approaches to learning being redefined
- Cohort of like minded young people
- Opportunities from scale and diversity
- Large, diverse estate & specialist facilities

# WQE Commitments

- Help to settle quickly and look ahead
- High quality teaching - responsive to student needs, personalised and supportive
- Regular feedback & encouragement, with commitment to working in partnership
- A diverse, safe and positive environment, without bullying or discrimination
- A community, based on consideration and respect at all times
- Help to plan progression
- Access to enrichment & wider opportunities
- High expectations and positive challenge



## 'WQE Commitment' The Student Charter

**The College is committed to providing every student with the best possible experiences, every day and helping you to make the most of these.**

**We are dedicated to finding the things that inspire and motivate you to make a difference in the world, to encouraging your ambition, to supporting and helping you to engage and be responsible for learning, and to preparing you well for your next steps.**

### Our commitments to you;

It is important to us that we can support you to set and achieve realistic, but ambitious goals through agreeing an appropriate programme of study with you, knowing you well and supporting your individual needs, as well as providing stimulating, varied and high quality teaching and learning.

Above all, the college will seek to provide the environment and conditions to support your progress and success, now and in the future. We will recognize you as an individual and support you to make appropriate progress and help you to identify appropriate longer term goals and supporting you in planning to reach these by developing experiences and skills for life and employment.

### You can expect;

- An identified person as a key point of contact, to provide support and to respond to your educational and welfare needs.
- An induction that enables you to make a confident start and helps you to know how to find things that you need, or how to get support if it is necessary.
- A safe and clean environment with positive, informative and attractive displays.
- A community of students and staff that are welcoming and supportive, inclusive and free from bullying or free from any form of discrimination.
- To be treated with respect, courtesy and dignity.
- Your views and feedback to be listened to and valued.
- Clear and accurate information and communication about:
  - Opportunities, courses and pathways
  - Entry and progression requirements
  - Finance, relevant charges or contributions and any support such as bursaries
  - Changes and developments during your time at the college
  - Celebrations, successes and other news
  - How to be safe at college, in the wider community and online
  - What we expect of you (see the WQE Expectations document and online college information)
  - Who you can discuss concerns with, or how to complain if necessary
- Access to general support, information and guidance from appropriately experienced and qualified staff, as well as appropriate additional learning support for specific identifiable needs, such as where a statement of needs exists
- Access to resources appropriate to your courses, appropriate and resourced places to study and technology to support your learning
- Enthusiastic and approachable teachers, who are qualified and who use approaches that are modern and suitable to the course
- Timely assessments leading to accurate and constructive feedback, ensuring you know about your progress and what you need to do to improve
- A structured and balanced programme with lessons that start and finish on time
- Opportunities to participate in or lead activities that enrich you as a person, promote good health and build a positive sense of community





# WQE Expectations

To achieve expected success requires:

- 100% attendance & punctuality.
- Active and positive engagement in all lessons & timetabled elements – a focussed core day
- Organisation and commitment beyond class (5 hrs per week/subject & meeting deadlines)
- Taking responsibility & accepting challenges
- Thought for others and consideration about how to make a positive impact in College, the community & the world beyond



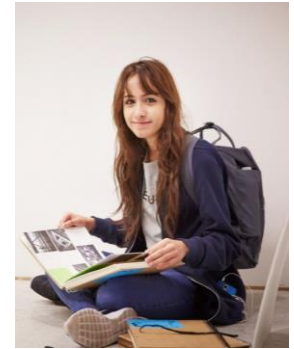
# It's a Partnership

- **Student** at the heart and taking the lead
- **Staff** are specialists – experienced and skilled in teaching, assessing and supporting through feedback. We will challenge every student!
- **Parents and carers** have a vital role to play, guiding and creating the environment for success, especially at key points of decision.



# Student Life

- 'opportunities to grow' and gain experiences
- 'opportunities to take a lead', make a difference and to impact on others or society
- Enrichments, trips, wider activities and facilities.
- Student led societies and an opportunity to link and network, as well as make new friends
- Active, open access student Council/Executive
- Options in sport – Participation or Competition
- Drama and performance opportunities
- Academic groups and support



# Contacting the College

- Every Student has a PPM (Personal Progress Mentor)
- Our Heads of Studies are  
Rakesh Naik  
Hawa Patel  
David Morgan
- For urgent or non-routine matters - contact any of the Executive Team or myself, via main reception
- 0116 2471147

## Our Five Associate Principals



Andrew Jackson (Associate Principal:  
Student Ambition & Progress)



Carolyn Davies (Associate Principal:  
Finance, Operations & Resources)



Donna Trusler  
(Associate Principal: Students & Welfare)



Sarah Oldfield (Associate Principal:  
Organisational Development, Learning & Experience)



Tim Rogers (Associate Principal:  
Planning, Performance & Curriculum)



WQE has an established and very successful history - what is next?

We want to keep improving, for our new cohort to do even better than those before

We want every student to grow, to flourish and be prepared as young professionals

We want work with you, to help our students to be the best they can be.

