

# Be extraordinary

wqe

Wyggeston &  
Queen Elizabeth I  
College



2022/23 Prospectus



It's your future  
**Be extrao**

WQE is a Sixth Form College at the heart of Leicester's education quarter, with a strong heritage and reputation. An unrivalled curriculum provides great flexibility, choice and quality of experience. The expansive and centrally located college estate offers spacious and well-resourced accommodation, including specialist academic, arts and sporting facilities.

Join us, and experience a community bursting with energy, ambition and aspiration. Where everyone can feel comfortable and confident, motivated and supported, in every detail, every step of the way.



# rdinary



# Welcome to our college

At WQE we have a simple, but passionate view that a great education is about more than achieving great results. We offer personalised encouragement and support, to bring the very best, the extraordinary, out of each and every one of our students.

So yes, this means achieving better results than you might have thought possible, but also that you leave us equipped with all the skills you need to be ready for the future.

We believe the quality, range and flexibility of our curriculum offer is unrivalled and we have invested heavily in our buildings and facilities, that are perfectly located on either side of a vibrant University Campus.

Alongside the comprehensive range of opportunities that are now available at WQE, the support we provide to all our students is exceptional and our promise to you, should you join us, is to create an environment where everyone, however they have travelled to us, feels comfortable and confident, motivated and supported, in every detail, every step of the way.

This is an exciting time at WQE and there has never been a better time to consider studying with us. We hope you will take a closer look at what we have to offer you using both our virtual tour on our website and by visiting us in person. We look forward to being able to welcome you into our college in the future.

**Paul Wilson**  
Principal











# Be inspired



We recognise that you will be coming to us with many interests and with a view to preparing for your longer-term future.

Whatever is motivating you, we know that you will want to embrace the opportunities ahead and that you will undoubtedly be striving to be an even better person as you progress; someone ready to make a difference to your own future and wanting to have a positive impact on others in the world too.

At WQE, you have a fabulous opportunity to explore the interests you have, the things that inspire and motivate you as an individual, or the areas where you may want to make the greatest difference as you prepare for the future.

What does that mean? It means looking beyond academic priorities, taking time to understand you as an individual and providing you with the technical, personal and social skills that will fully prepare you for whatever future you choose.





Every one of you will have arrived to this point in your own way, with your own set of circumstances; on a journey unique to you.


What matters to us however, is not where you have come from, but why you've come, and what you want to make of your life – that is what really counts. We will provide you with all the opportunities you need for educational and personal growth.

As long as you join us with the ambition, energy and commitment to succeed, we promise you three things. We will recognise your personal ambitions and there will be no glass ceilings on what you can achieve; you will also be assured that staff with real expertise and experience will be there for you and focussed on you as an individual; above all, you will have the benefit of our total support and encouragement, every step of the way.



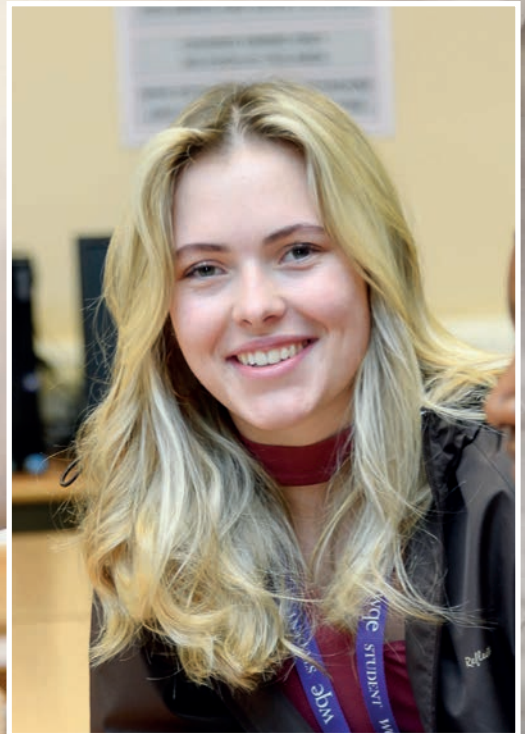
# Be ambitious





“When I started WQE, I was a little unsure about whether I wanted a career in Forensic Pathology or Veterinary Medicine. My aim was to work hard and achieve the best grades I possibly could. After A Levels, I now want to go to university to study Veterinary Medicine.”

Alice  
Studying A Levels in Biology,  
Chemistry and Geography








# Be responsible



The background of the page is a photograph of a classroom. In the foreground, a student wearing a maroon hijab and a black floral-patterned top is seated at a desk, looking towards the right. In the background, another student with blonde hair is seated at a desk, looking down. There are computer monitors and desks visible in the classroom setting.

Whether you progress to university or directly into employment, you will find expectations on you as an individual will change and grow, which is why the first thing you will notice from day one at WQE is how you are treated – increasingly as a young adult.

We will encourage you to become increasingly independent, self-reliant, responsible and open-minded, offering you all the support you need to do so. From managing your time and study, to planning your future, we will place you at the heart of all that we do, supporting you to make the best of the great opportunities that will be open to you.

At WQE you will gain the confidence to develop personal responsibility, but always knowing our support is there. You will develop the life skills that are so essential as you prepare to move on.

Almost all of us need support and a steer in the right direction from time to time. So we believe it is really important that we work directly with you and those closest to you, such as your parents/carers at the key moment of decision. We recognise the value of working together so we are determined that we build a mature, trusting and open three way partnership, between you, others who support you, and us, your college.

“Support from teachers has been of high standard and I have felt that I have been able to ask for help whenever I needed it. After taking Business and Economics, I feel well prepared to study Business Management at university.”

Harry  
Studying A Levels in Business,  
Economics and Sociology

You may know exactly what you want to study, where you want to go and what you want to achieve in life, but you may not. You will undoubtedly be looking to us to help you focus on the right things and take the next important steps.

What we know from experience is that your journey is just beginning and we are committed to helping you to make the best of it and take advantage of the opportunities that lay ahead. We will be right at your side, helping you prepare a route and respond at each crucial stage.

Whatever your starting point, we will develop a personalised programme of study with you, taking into account your recent successes and your longer term personal, educational and career goals.



# Be ready

Developing your wider experiences and skills, as well as helping you to understand, in detail, how these relate to your future plans, will be priorities. Not only will we expect you to leave WQE highly qualified to take your next steps, but also be ready with the character, skills and versatility you need to succeed.

One of our most important tasks, whatever the initial plan may be, is to help you progress and step confidently towards the future, aware of the opportunities that are open to you and totally ready to seize the moment, as a well-rounded individual, equipped to continue your journey and build a successful, long-term future.









What is WQE all about? Quite simply we are about you. All of you, our individual students, who together make up our great community.

Wherever you come to us from, whatever your story, we believe in the extraordinary in you. It is there in each of you already; we will help you to develop and use your individual talents.

We are determined to give you a great education that will enable you to do extraordinary things. We'll provide the perfect opportunities and preparation to pursue your chosen pathway or profession.

An education at WQE is defined by aspiration and ambition, personal growth, shared effort and individual achievement, in order to support your progression to even greater things.

When you join us, we promise, we will give you the skills, opportunities, experiences and environment to find the extraordinary in you; to achieve more and become more than you ever thought you could be.



# Be extraordinary







# Open Day: come and join us

Open Day provides an opportunity to celebrate our College, in all its glory, filled with our students and staff. You will have the opportunity to talk to specialist subject staff about individual subjects, gaining in-depth knowledge about our highly regarded courses, together with our well-respected teaching and learning methodologies. You will also meet current students, gaining their perspective on college life.

Feel free to explore our extensive campus, offering state of the art sports, dining and study facilities. Our Welfare and Skills team will be available to discuss any support needs you may have; we pride ourselves in offering true equality of opportunity. You will also be able to seek more general advice and information about the great opportunities available.

Come and experience WQE for yourself.

Parents and carers, we would love to see you too!

At the time of writing, we are planning for an onsite event, with some virtual elements. Please keep an eye on our website for updates.



# Saturday 13th November 2021

“Studying at WQE has been an amazing experience. I have been able to meet new people and gain many life skills. The college has many facilities, a great careers team and Personal Progress Mentors which have been very helpful especially when it comes to applying to university.”

Freya  
Studying A Levels in Geography,  
Psychology and Fashion & Textiles

# Teaching and support



At WQE we are committed to providing the very best teaching and support for you. We provide comprehensive, academic and personal support to every student, and teaching is personalised to your needs. As far as we are concerned, if any of our students face a challenge that they don't know how best to meet, then it becomes our challenge too.

At times we all need advice and support to fulfil our potential. Our role is to listen, advise and encourage you, within the classroom and beyond.

Ultimately, we aim to be there with the right level of support, both emotional and practical, whenever it is needed or asked for; we provide our students with the tools they need to free them from concerns which may prevent them from realising their potential.











Our staff will regularly assess your progress, give feedback and discuss your individual needs, because it's always about us getting it done, together.

Support comes in all different shapes and sizes and is planned to provide every individual with a personalised programme and college experience.

Teachers with specialist subject knowledge are on hand to offer support both inside and outside of the learning classroom, to help consolidate learning or just to get help to push for those higher grades.

Learning is not all about subject knowledge however; there are a range of skills that you will need to develop to be a successful student and these can be developed through our specialist teams, who support academic progress and study skills development, as well as providing extended, personalised support.

Every WQE student will have the one-to-one support and guidance needed to be successful. You will have your own 'go to' Personal Progress Mentor. These staff



don't teach – they are there solely to look after students, help keep them on track and support them in career and progression planning.

We also understand that some students have identified needs that require specific support to be put in place for them to engage with learning and to maximise their success at WQE. Our Welfare and Skills Team will arrange this.

Whether you have a specific learning need, health condition or any other barrier to your learning, we are here to help you overcome this and support you with our own staff and also specialist provision, such as counselling services, mentoring and specialists workshops.





We know that many students face financial challenges and may see this as a barrier to participating. Don't worry, WQE Student Services Teams are here to ensure you know about the support available. Whether it's getting resources to help you on your course or providing a bus pass or a lunch, we can do this.

We administer the 16-19 Bursary fund for eligible students to get the support they need to be here and learn.

There is support around every corner at WQE.

It is there for every student. So no matter how trivial you think something is, do say, and we'll find a way to support you.

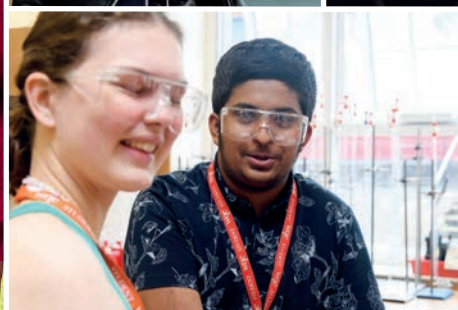
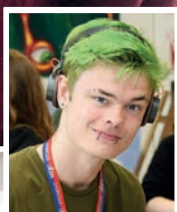




“WQE is a great college with amazing teachers and study support that help you to be independent and work towards your goals. My plan after WQE is to study an ACCA qualification and move forward in the Accounting field.”

Shivang  
Studying A Levels in  
Accounting and Level 3 BTEC  
in ICT and Business

99%  
pass rates





# Courses, development and progression

WQE is a truly diverse, educational community which provides an unequalled platform for academic and personal growth. It has something to offer students across the full range of academic abilities.

We ask of you as a student only what we ask of ourselves – that you are open, honest, committed and motivated to be the very best you can be.



**45** enrichment  
courses

We offer the most extensive range of A-level and classroom-based vocational courses in the local area through a broad and flexible curriculum.

This allows you to find what best suits you and plan a programme that reflects your personal strengths and passions.

**85%<sup>+</sup>**  
students go on to  
higher education

Our vocational courses lend themselves more naturally to the workplace environment, and the style of learning and assessment reflects this. The college actively encourages and supports all students to apply their learning, and where appropriate, secure placements during their time with us.

We are very proud of the traditional values of hard work and respect for which WQE is known. We are also proud of our uniquely rich and long-standing reputation within our community, and for our record of success and supporting the progress of our students.

We recognise the needs of a 21st Century sixth form student and through our caring, committed, innovative and personalised approach, your time with us should empower you to explore and to discover what you are capable of.

As every student has different skills and different goals, we recognise that every journey is personal. Ultimately, the most important thing we can teach you, is how much you can achieve.

We recognise that academic achievement is fundamental to any successful, educational experience. Whatever your level of study or type of programme, results are important criteria that students and parents/carers will take into account when deciding on post-16 study.

We are particularly pleased that we are able to match students to exactly the right programme and courses for their needs and offer extensive support as part of every programme.

As a result we have continued to maintain the highest standards, whilst at the same time providing access to students across a wide range of backgrounds and abilities. Our detailed and personalised approach ensures that every one of our students is well placed to reach and exceed the ambitious expectations we have of them as individuals.







“The lessons at WQE are interesting and engaging; resources given out for learning and revision have been really helpful. Art, Craft and Design has helped to introduce me to knowledge and new process of the art world through workshops and research tasks. I plan to continue studying art at university.”

Jennifer  
Studying A Levels in Art, Craft & Design,  
Mathematics and Psychology

# Progression from WQE

At WQE we are committed to preparing all of our students to progress into a positive outcome after college; whether that's university, an Apprenticeship or something else.

This means that each student is offered the support and impartial advice and guidance needed to make aspirational, yet realistic, applications for either further study or professional employment. Students are also given the opportunity to develop their employability skills through a programme of activities.

We have developed close working relationships with a wide range of universities to ease transition and to allow our students to progress onto suitable courses, often receiving preferential offers for higher level study. The result is that every year numerous students gain admission to top universities or embark on successful careers as Young Professionals.

We also have great success with students entering at Levels 1 and 2, who make very rapid progress. Many successfully progress to Advanced level studies and beyond.

Students on vocational programmes have extensive links with relevant employers and more formal opportunities for work experience as part of their programmes. We also work closely with local businesses to offer work shadowing, work experience, talks and workshops on employment and employability.







This work is overseen by specialist careers and progression staff who organise a wide range of events for students to attend to help them gain knowledge and skills that prepare them for the world beyond WQE.

# Outstanding facilities

Our extensive, leafy campuses and specialist facilities make WQE an attractive place to study. Split over two sites, no other college locally has as much outdoor space for sport and leisure.

We have extensive study and learning resource facilities, ranging from traditional and inspiring library spaces to IT study centres and multiple supervised study rooms. There are also fitness suites, creative spaces and great social and dining facilities.

Our twin campuses offer extensive and modern specialist sports facilities enabling a wide range of sports for competition and participation. This includes tennis, netball, basketball and futsal courts, as well as cricket, rugby and football pitches.

Teaching and learning at WQE takes place in purpose-built, specialist accommodation.

There is a state-of-the-art facility in J Building for art, design, graphics, photography, textiles and ceramics, and includes wood and metal workshops. It also houses a café, art gallery, dark rooms, and drama and music studios.

Our science laboratories are designed for each individual science and are modelled and equipped to incorporate specialist facilities for science teaching and learning.







The college has multiple Learning Resource Centres providing large, open, flexible learning spaces with networked computers accessing the Virtual Learning Environment (VLE), the internet, subject specific-software and Office applications.

These study areas have relevant and stimulating materials and learning facilities which provide a calm and well-equipped independent study area. Students have access to over 22,000 current publications, e-books and online study platforms supporting all aspects of the WQE curriculum and more.

The college has extensive, safe and pleasant grounds to socialise in. There is also a modern sports hall complex that includes a high specification gym, which is available throughout the day for students to use.





WQE Online provides online access to information and resources both in general form and specific to courses as well as specific student level access to enable individuals to track or access information relevant to themselves.

Extensive and modern IT facilities are available to help produce high quality coursework using many different software packages; including industry standard software relevant to courses.

Our students benefit from our estate and high-quality buildings located in Leicester's established learning quarter and next to the University of Leicester. Many curriculum teams have links with university counterparts and for some projects or independent work, students have access to the David Wilson Library.

Our students have the opportunity to work in collaboration with University of Leicester PhD students on projects such as Environmental Sustainability and Equality and Diversity, supporting the local community.

Our students may also use some university facilities including the bookshop and cashpoints.

Our proximity to the university campus creates a fabulous environment, with the space to grow and the time, freedom and opportunities to express and to challenge yourself.









# Our community and culture







At its heart, WQE is a passionately, inclusive learning community; we are very proud of our reputation as a friendly and welcoming college.

We always strive to provide our students with a platform for personal and academic growth in an environment where aspiration, integrity, fairness and openness towards each other are qualities we teach and value.

We expect everyone who joins us to respect the opinions of others; to join a community that inspires and supports each other regardless of background or ability, and we expect everyone to listen and be heard in equal measure.

Because everyone is different. Because everyone counts.

While WQE has an incredibly rich heritage and tradition for academic excellence and inclusivity, we also have a very contemporary commitment; one of ambition and achievement for all. WQE is a modern college with a vibrant, diverse and progressive culture, where our students get the opportunity to do things they had never previously considered – taking responsibility, volunteering, getting involved in student groups and making a difference within the college and beyond, in our communities.

Our facilities and buildings are open, inspiring and friendly places, full of energy and vitality that create a safe, positive, supportive learning environment. Students enjoy being at WQE!

# Our courses



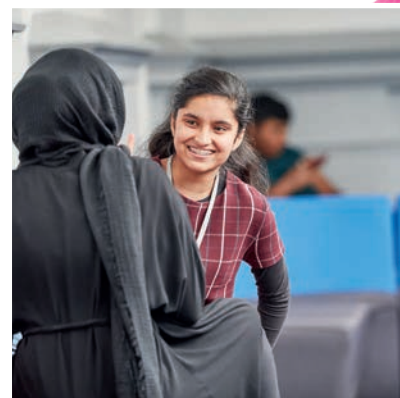
From the time of your application to WQE, we will work with you to create an individual programme of study, building on the valuable experience gained in your previous school or college, and ensuring a balance between examination courses, enrichment activities, support for your learning, study time and leisure.

Our aim is to enable you to choose an individual combination of courses or a specific pathway that meets your needs, interests and aspirations, and offers you the best opportunity for success and progression.

WQE offers a broad range of courses from Entry Level to Level 3. These include ESOL, GCSE, A-level and BTEC courses. Each subject, level or pathway has specific, published entry criteria to ensure you choose the programme to which you are best suited and that we enrol you onto a programme on which you will succeed.

“My ambition was to have a deeper understanding of religion in society and ancient civilisations, in preparation for an Anthropology degree. WQE has helped me achieve this and given me the means to attain an unconditional offer from a university.”

Isabel  
Studying A Levels in Ancient History, Sociology and Religious Studies







## Choose the right pathway

When researching and planning your programme you should take into account what your GCSE achievement is likely to be, what you are interested in, and how studying a subject may prepare or qualify you for what you want to do after WQE.

Making choices about what to study can often be difficult when faced with so many options; including subjects that may be new to you. By visiting the WQE website, viewing our virtual tours, both College wide and subject specific, taking part in subject webinars, and attending our Open Day you will gain more information

on subject, level and pathway options. You can find out about entry requirements, how a subject or course is assessed, what it combines with, and so much more.

Take time to explore, consider carefully and investigate fully – you need to make the right choice for you!

As a guide, use the table below to identify the level and programme type that best matches the qualifications with which you expect to enrol at WQE. Within a programme, individual course/subject specific entry criteria apply. These can be checked on our website. This table is a guide only.

Entering with	Level	Programme	Duration	Entering with
<b>6 GCSEs grade 9–4 (A* - C)</b> (including English Language; at least 2 GCSEs at 5 or above)	<b>Level 3</b>	- A Levels - Vocational Level 3	<b>2 years</b>	<b>University Employment Higher/Degree Apprenticeships</b>
<b>5 GCSEs grade 9–4 (A* - C)</b> (inc. English Language)	<b>Level 3</b>	- Vocational Level 3	<b>2 years</b>	<b>University Employment Higher/Degree Apprenticeships</b>
<b>5 GCSEs grade 3-4 (D/C)</b> (inc. English Language)	<b>Level 2</b>	- GCSE - Vocational Level 3	<b>1 year</b>	<b>Level 3 courses</b>
<b>5 GCSEs grade 2+</b> (inc. English Language)	<b>Level 1</b>	- Employability - English - Maths	<b>1 year</b>	<b>Level 2 courses</b>
<b>5 GCSEs grade 1+ (F+)</b> (or below)	<b>Entry Level</b>	- English - Maths - ICT	<b>1 year</b>	<b>Level 2 courses</b>





## Level 3: A levels and Advanced Level Vocational courses

The majority of students at WQE are enrolled on a two-year advanced level programme. WQE offers an exceptionally wide range of advanced level courses creating vast flexibility when it comes to timetabling students' personalised programmes; almost all combinations are possible.

### Advanced level courses:

- Are a continuation of the kind of education which you have experienced on your GCSE courses, but with greater specialisation and depth
- Include A-levels and a range of other Level 3 vocational courses
- Consist of many subjects with which you are familiar – English, History, Chemistry, Maths, for example – but also many that will almost certainly be new to you such as Psychology, Law, Accounting, Ancient History, Film Studies and Electronics. There is an extensive range of subjects from which to choose
- Vary significantly one from another – Photography is not the same as Physics – but all develop your academic and intellectual skills; in some cases practical skills are also an essential part of the course
- Are assessed through a combination of examinations and coursework, but in most subjects the examinations carry the greater weight
- Lead to many options in higher education and employment
- Include courses of a more vocational or applied nature. These have many of the same characteristics as other advanced level courses but have stronger links with the world of employment. Assessment depends more on coursework than on examinations
- Often have specific entry criteria.

When planning your programme, you should take into account what your GCSE achievement is likely to be, what you are interested in and how studying a subject may prepare or qualify you for what you want to do after WQE. Students who have taken a subject at GCSE should normally have achieved at least Grade 4 or 5 in order to study this subject at A-level.





Subjects we plan to offer for 2022 entry by Curriculum Area are as follows:

### **Biology, Chemistry and Applied Science (BCAS)**

---

#### **Level 3 Programmes**

- Applied Science BTEC Diploma (equivalent to 2 A Levels)
- Applied Science BTEC Extended Certificate (equivalent to 1 A Level)
- Biology A Level
- Chemistry A Level

#### **Level 2 Programmes**

- Biology GCSE
- Chemistry GCSE

#### **Level 1 Programme**

- Science Certificate in Employability

### **Business, Economics and Finance (BEF)**

---

#### **Level 3 Programmes**

- Accounting A Level
- Business Cambridge Technical Extended Diploma (equivalent to 3 A Levels)
- Business Cambridge Technical Diploma (equivalent to 2 A Levels)
- Business Cambridge Technical Extended Certificate (equivalent to 1 A Level)
- Business Studies A Level
- Economics A Level

#### **Level 2 Programme**

- Business Cambridge Technical Diploma (equivalent to 4 GCSEs)
- Business Cambridge Technical Extended Certificate (equivalent to 2 GCSEs)

#### **Level 1 Programme**

- Business Certificate in Employability



### **English, Film and Languages**

---

#### **Level 3 Programmes**

- English Language and Literature A Level
- English Language A Level
- English Literature A Level
- Film Studies A Level
- French A Level
- German A Level
- Spanish A Level

#### **Level 2 programme**

- English Language GCSE

#### **Entry Level**

- English E1 Functional Skills ESOL
- English E2 Functional Skills ESOL
- English E3 Functional Skills ESOL

## Health and Sport

### Level 3 Programmes

- Health & Social Care Cambridge Technical Extended Diploma (equivalent to 3 A Levels)
- Health & Social Care Cambridge Technical Diploma (equivalent to 2 A Levels)
- Health & Social Care Cambridge Technical Extended Certificate (equivalent to 1 A Level)
- Physical Education A Level
- Sport & Physical Activity Cambridge Technical Extended Diploma (equivalent to 3 A Levels)
- Sport & Physical Activity Cambridge Technical Diploma (equivalent to 2 A Levels)
- Sport & Physical Activity Cambridge Technical Extended Certificate (equivalent to 1 A Level)

### Level 2 Programmes

- Health & Social Care Diploma (equivalent to 4 GCSEs)
- Health & Social Care Extended Certificate (equivalent to 2 GCSEs)
- Sport Cambridge Technical Diploma (equivalent to 4 GCSEs)
- Sport Cambridge Technical Extended Certificate (equivalent to 2 GCSEs)

### Level 1 Programme

- Health Certificate in Employability

## Humanities

### Level 3 Programmes

- Ancient History A Level
- Geography A Level
- History A Level
- Law A Level
- Law BTEC Extended Certificate (equivalent to 1 A Level)
- Politics A Levels

### Level 2 Programme

- Citizenship Studies GCSE
- Law BTEC Certificate (equivalent to 1 GCSE)

## Mathematics

### Level 3 Programme

- Mathematics A Level
- Mathematics, Further A Level

### Level 2 Programme

- Mathematics GCSE

### Level 1 Programme

- Maths NCFE Level 1 Certificate

### Entry level

- Mathematics WJEC Entry Level Certificate

## Media and Creative Arts (MCA)

### Level 3 Programmes

- Art, Craft & Design A Level
- Art & Design Extended Diploma (equivalent to 3 A Levels)
- Creative Digital Media BTEC National Extended Certificate (equivalent to 1 A Level)
- Drama & Theatre A Level
- Fashion & Textiles A Level
- Fine Art A Level
- Graphic Communication A Level
- Media Studies A Level
- Music A Level
- Photography A Level
- Product Design A Level

### Level 2

- Art (Fine Art) GCSE
- Graphic Communication GCSE
- Media Cambridge Technical Extended Certificate (equivalent to 2 GCSEs)
- Photography GCSE







## Performing Arts (Off-site Provision)

### Level 3 programmes

- Performing Arts Practice, Musical Theatre BTEC Ext Dip (LCPA) (equivalent to 3 A Levels)
- Performing Arts Practice, Dance BTEC Ext Dip (LCPA) (equivalent to 3 A Levels)
- Performing Arts Practice, Musical Theatre BTEC Ext Dip (Studio 79) (equivalent to 3 A Levels)
- Performing Arts Practice, Dance BTEC Ext Dip (Studio 79) (equivalent to 3 A Levels)

### Level 2 Programmes

- Performing and Production Arts Industry Skills Diploma (Studio 79) (equivalent to 4 GCSEs)

## Physics, Computing and ICT

### Level 3 Programmes

- Computer Science A Level
- Electronics A Level
- ICT BTEC Extended Diploma (equivalent to 3 A Levels)
- ICT BTEC Diploma (equivalent to 2 A Levels)
- ICT BTEC Extended Certificate (equivalent to 1 A Level)
- Physics A Level

### Level 2 Programmes

- ICT BTEC Diploma (equivalent to 4 GCSEs)
- ICT BTEC Extended Certificate (equivalent to 2 GCSEs)

### Level 1 Programme

- ICT Certificate in Employability

### Entry Level Programmes

- ICT E1 Functional Skills
- ICT E2 Functional Skills
- ICT E3 Functional Skills

## Social Science

### Level 3 Programmes

- Psychology A Level
- Psychology BTEC Extended Certificate (equivalent to 1 A Level)
- Religious Studies (Philosophy, Ethics & Religion) A Level
- Sociology A Level

### Level 2 Programmes

- Psychology GCSE
- Sociology GCSE

## Additional opportunities

### Extension Subjects

Many students take an additional qualification alongside their main programme. Those suitably qualified are offered the opportunity to complete the Extended Project Qualification (EPQ) – a research-based piece of work helping develop the skills of independent study that are so important for success in higher education.

Other elements can be integrated into programmes of study to add support, meet personal needs or help to broaden knowledge and experience. You will receive personalised advice and guidance as to what programme best suits you.

### Enrichment courses

We are proud of our tradition of offering students the opportunity to participate in additional courses and activities that broaden their experience, develop their personal skills, prepare them for the future and add to the enjoyment of being a WQE student.

Some courses may complement your exam subjects whilst others help you to develop skills that may be important for your higher education and employment prospects, and can be taken into your adult life.

Enrichment can simply be an opportunity to try something new and to meet students from other areas of college life.

You will choose your enrichment course during enrolment alongside your main programme; there will be a broad choice of courses for you to explore when you join us. More information on the courses we offer and their content is available on our website.

### Getting involved in the community

Students are encouraged to get involved in a variety of activities both within the College and in the wider community. We also encourage the creation of student led societies and groups to help like-minded students develop interests together.

There are opportunities to support fellow students through mentoring programmes. Students link with local schools through some enrichment activities, such as Sports Volunteers involved in primary schools' Tag Rugby tournaments. Student Ambassadors are active in supporting various events and helping to promote the college – look out for them on Open Day!

### Venturing beyond the classroom

You may have the opportunity to take part in various educational trips and visits to complement classroom learning and add an extra dimension to college life. Some of the places our students have previously visited include local sites such as The National Space Centre and New Walk Museum along with visits to Sheringham, the Supreme Court in London and international visits to Rome, Venice, New York and Berlin. These are just some examples of learning outside the classroom; there are many more! You can keep up to date on trips and visits that have happened by visiting the news section of our website.

### A sporting chance

The College has a strong tradition in sport and offers an extensive sporting programme.

Whether you just want to try to keep fit and have some fun, or you take your sport seriously and want to compete at the highest level, we have something to suit you. There are extensive indoor and outdoor facilities for sport and these enable a wide range of activities including; basketball, netball, volleyball, badminton, futsal and cricket training facilities. There are also high specification fitness suites available on both campus' which are available throughout the day for student use within the enrichment programme and spacious green sports pitches that facilitate most outdoor team sports too.



Over 1,000 students participate in sport and physical activity each year, either as part of their main programme or as enrichment. You can pursue many sports for pleasure or at a competitive level; there are clubs covering both team and individual sports available to all students. We also offer sports leadership and coaching opportunities.

Many of the teams and individuals take part in local, regional and national competitions, at both junior and senior levels. Each year College teams and individuals represent the East Midlands in the AoC Sport national finals; with a track record of success.

## Moving on

WQE has well-established systems and processes for supporting applications to Higher Education, Apprenticeships (including Higher and Degree level opportunities) and employment. Each student is offered support and impartial advice and guidance to make aspirational, yet realistic, applications for either further study or professional employment.

WQE has close working relationships with a number of universities to ease transition, allowing our students to progress onto suitable courses and receive preferential offers for higher level study. Regular visiting speakers from Higher Education institutions give presentations and talks around a wide range of progression issues.

We also have excellent links with local employers and Apprenticeship providers who spend time at WQE talking to students about opportunities in the world of work. There is a real focus on this both at our annual Careers Fair and during Careers Week.

The most popular degree courses chosen by students offered places in 2020:

Course	No. of Students
Accounting/Finance/Economics	99
Business/Management/Marketing	91
Biomedical including Pharmacy/Medicine/ Optometry/Dentistry	88
Law	83
Art/Design/Graphics/Textiles	64
Psychology	63
Computing/ICT	60
English, film and media	56
Nursing/Midwifery (including other allied health professions and health and social care)	47
Teaching and education	41





## Supporting students with disabilities

WQE welcomes applications from all students for whom it is possible to offer a suitable course of academic study. We recognise the potential of students who have already overcome the challenge of coping with an illness, impairment or disability.

We provide comprehensive support for those with a physical disability, a specific learning difference such as dyslexia, mental ill health or a medical condition. There is a wide range of individualised support available to meet your needs which may include access to any of the following: mentoring, quiet spaces, group workshops or exam access arrangements. Our Welfare and Skills Team will work with you from the application stage to course completion. Help us by letting us know your needs before you make a formal application. We will then work closely with you discussing and planning for your support needs from the time you express an interest in joining WQE.

## Financial support

At WQE, essential resources are provided free of charge, unless you keep them after your course. You will be expected to pay towards the cost of field trips and visits; although the charges for these are kept to a minimum. Examination fees are normally paid by the College.

Students who are under 19 on 31 August in the academic year their course starts can apply to the 16-19 Bursary Fund for financial support. This means-tested fund is available to provide help with the extra costs incurred by deciding to stay in education.

The Bursary Fund is made up of two parts – an enhanced bursary available for Vulnerable Groups and a discretionary fund administered by WQE to support eligible students facing financial barriers to participation. The Bursary Fund provides help with costs such as transport, meals, college trips or course related equipment.





Students who are 19 or older at the start of their course may be eligible to apply for discretionary support.

A new application must be made at the start of each academic year and up to date relevant evidence of household income needs to be provided to confirm eligibility. Application forms for the Bursary Fund will be available during enrolment in August.

We know that travel to college can be expensive. We advise you to investigate the cost and availability of travel passes from commercial providers as soon as possible. Student travel passes are available directly from travel companies but the tariffs for 2022/23 are unlikely to be published until June 2022 at the earliest.

Eligible bursary recipients will be able to access support to help with transport costs.

### **Getting involved**

We want our students not only to attend WQE but also to help shape its character and its

future development. Students' views matter to us; we listen to them and respond.

Our Student Executive is the recognised student representative association in the College.

The group aims to:

- represent the views of College students – what you want!
- help make your time here at WQE as enjoyable as possible
- organise charity and other events for all students to unite and experience new things.

Approach any of the group about absolutely anything; they are the main channel of communication between the student body and our Executive Leadership Team. Equally important in the group's work is liaising with other agencies to ensure the best services are available and to ensure your time at WQE is memorable.

### **Student Governor**

The College's governing body, the Corporation, includes two Student Governors with full voting rights. The Student Governors are elected by our students and are able to bring before the Corporation any issues they feel are of importance.

### **Student voice and parent/carers views**

There are many ways in which students and parents/carers can make their views known, including:

- Focus groups
- Questionnaires
- Webinars

Perhaps, most importantly, we set out to be open and approachable so that there can be an ongoing dialogue among and between all elements of the College community. At the end of formal surveys of student opinion we have asked a simple question:

Would you recommend this College to your friends? We get a resounding ... YES!



## Applying to WQE

We welcome applications from students who are, or expect to be, qualified to benefit from the curriculum we offer.

### Offer and entry requirements

We ask that you achieve a certain level of academic attainment in order to enrol on your course at WQE. We have carefully considered entry requirements for every course, level and pathway and believe that if you achieve these grades you will be well prepared for the challenge of study and can start your programme at WQE with confidence.

Our published entry criteria for individual subjects, levels and pathways ensure that we are able to offer you appropriate courses, which match your interests, needs and capabilities. Sixth Form study builds upon knowledge and skills gained previously and moves you through academic and vocational programmes which normally culminate in assessed coursework



and written examinations. This is why your predicted and actual performance in GCSE examinations is of key interest to us; we need to establish that a foundation of knowledge and skills is in place on which we can help you build.

The specific entry requirements for each course, level or pathway can be found on our website.

Please ensure you understand these entry requirements. If in doubt – please ask.

The full Admissions Policy is available on the College website or on request, just email; [admissions@wqe.ac.uk](mailto:admissions@wqe.ac.uk).

### Special consideration

The College may give special consideration where an applicant's commitments to elite performance in sport, the arts or some other field have impacted on academic study.

The College will consider applications from students who do not meet the offer requirements where significant extenuating circumstances exist (e.g. long-term illness). Such applicants should contact the College for advice prior to submitting their application.

For further information about the application and admissions process please contact us: email: [admissions@wqe.ac.uk](mailto:admissions@wqe.ac.uk) or apply to WQE at: [www.wqe.ac.uk](http://www.wqe.ac.uk).





## The process

### 2022 prospectus available

This prospectus will be distributed to all publicly funded secondary schools in Leicester. Students at other schools may view the prospectus online, request a hard copy from the college or pick one up at liaison events or on Open Day.

### Information and guidance

Through your school you will receive information and guidance about the options available to you post-16. These may include visits or presentations from WQE colleagues.

### Applications

Your application to study at WQE will be through PS16 the area wide application facility for most students; this will be managed by your school. If your school does not use PS16 you can access this and make your application directly to the college directly to the college via a link to the PS16 portal on our website..

In order to guarantee that your application is considered, it needs to be received by 31 January 2022.

### Application Decisions and Guidance Meetings

Your application will be considered by the College as soon as possible after the deadline. Applicants who are well qualified for their

chosen courses will receive an offer of a place with an invite to attend an Offer Holders event. Applicants identified as needing additional advice may be invited to an individual Guidance Meeting on Tuesday 8 or Wednesday 9 March 2022. Partner schools will be informed of these dates and applicants should ensure that they are available to attend.

### Places offered

Successful applicants who have applied by the deadline will normally receive the offer of a place by the end of April. You will need to confirm acceptance of your offer as directed.

### Enrolment begins

At the time of writing the GCSE results day has not been confirmed. Enrolment will start immediately after results are available.

Details regarding enrolment will be communicated to applicants who accept the offer of a place. It will be essential that you are available at the start of and throughout this process.

## College policies

### Equality and diversity

The College is committed to the equality of opportunity and to a proactive approach to equality, which supports and encourages under-represented groups, promotes inclusivity and values diversity.

### Safeguarding

The College is committed to the safeguarding of all of our students, staff and visitors. We take our safeguarding responsibilities very seriously. To help students get the support they need, we have a team of fully trained and very approachable, designated Safeguarding staff. Our safeguarding freephone number is 08000 6142222 to contact one of our team.

All information provided is accurate at the time of writing (July 2021). The details given represent a careful and reasonable prediction of what we hope to offer in 2022/23. This cannot be guaranteed.

# Join us at our Open Day: Saturday 13th November 2021



University Road  
Leicester LE1 7RJ

Regent Road  
Leicester LE1 7LW

t: 0116 247 1147  
e: [admissions@wqe.ac.uk](mailto:admissions@wqe.ac.uk)  
w: [www.wqe.ac.uk](http://www.wqe.ac.uk)